

"New Generation" of gear

TORO
product by A.Sassi



TORO The spirit of technology strikes hard, with an ever more compact body Toro follows the concept of the gear of 'new generation' starter with Leo and Geko. This new gear replaces the traditional machine MF/MB58 offering the same features of the precedent Sassi gear. Toro is very compact and versatile

with a static load up to 4200kg. Has three positions (vertical . horizontal right and left) and the motor can be turned in order to fulfill all installation requirements. The motors are VVVF and two speed 4/16 and 6/24 poles. Drum brake and permanent lubrication. Toro has spoked pulleys and sheaves from Ø320 to 700mm.



Authorized A. Sassi's distributor in Africa - Asia - East Europe - Oceania - South America

FEATURES

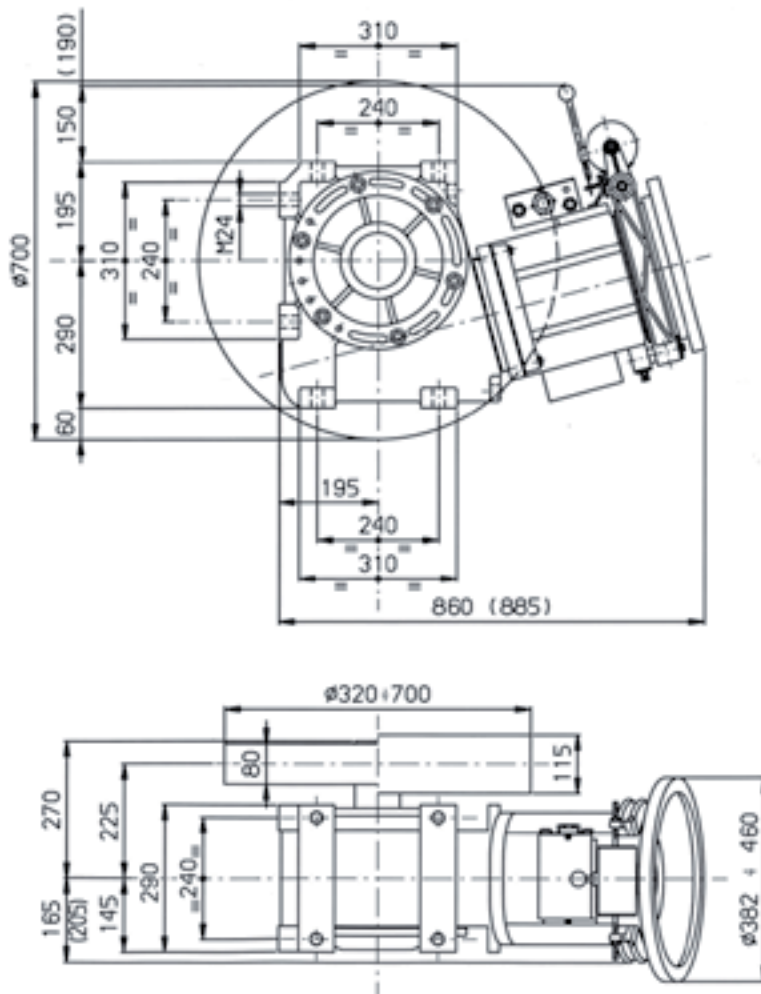
Max static load: 4.200 kg
 Range Power at 4/16 poles: 3,5 ÷ 11 kW sync
 Range Power at 6/24 poles: 2,9 ÷ 6,6 kW sync
 Range Power VVVF at 4 poles: 3,3 ÷ 20,6 kW sync
 Moment of inertia J: 0,026 kgm²
 Ratio: 1/61 - 1/49 - 1/39 - 2/53 - 3/47

SHEAVES								
∅ (mm)	Grooves	2 - 7	2 - 6	∅ (mm)	∅ (mm)	∅ (mm)	∅ (mm)	∅ (mm)
	Phi ropes	8 - 9	10	xxx	xxx	xxx	xxx	xxx
	N (mm)	14	18					
320	L (mm) / kg	115 / 41						
360	L (mm) / kg	115 / 48						
400	L (mm) / kg	115 / 55	115 / 55					

SHEAVES								
∅ (mm)	Grooves	2 - 3	4	5	6			
	Phi ropes	8 - 12	13 - 16	8 - 12	13 - 16	8 - 12	13 - 16	8 - 12
	N (mm)	18	21	18	21	18	21	18
450	L (mm) / kg	80 / 24	80 / 24	80 / 24	115 / 32	115 / 32	115 / 32	115 / 32
480	L (mm) / kg	80 / 27	80 / 27	80 / 27	115 / 35	115 / 35	115 / 35	115 / 35
520	L (mm) / kg	80 / 32	80 / 32	80 / 32	115 / 39	115 / 39	115 / 39	115 / 39
560	L (mm) / kg	80 / 35	80 / 35	80 / 35	115 / 43	115 / 43	115 / 43	115 / 43
600	L (mm) / kg	80 / 39	80 / 39	80 / 39	115 / 49	115 / 49	115 / 49	115 / 49
650	L (mm) / kg	115 / 57	115 / 57	115 / 57	115 / 57	115 / 57	115 / 57	115 / 57
700	L (mm) / kg	115 / 69	115 / 69	115 / 69	115 / 69	115 / 69	115 / 69	115 / 69

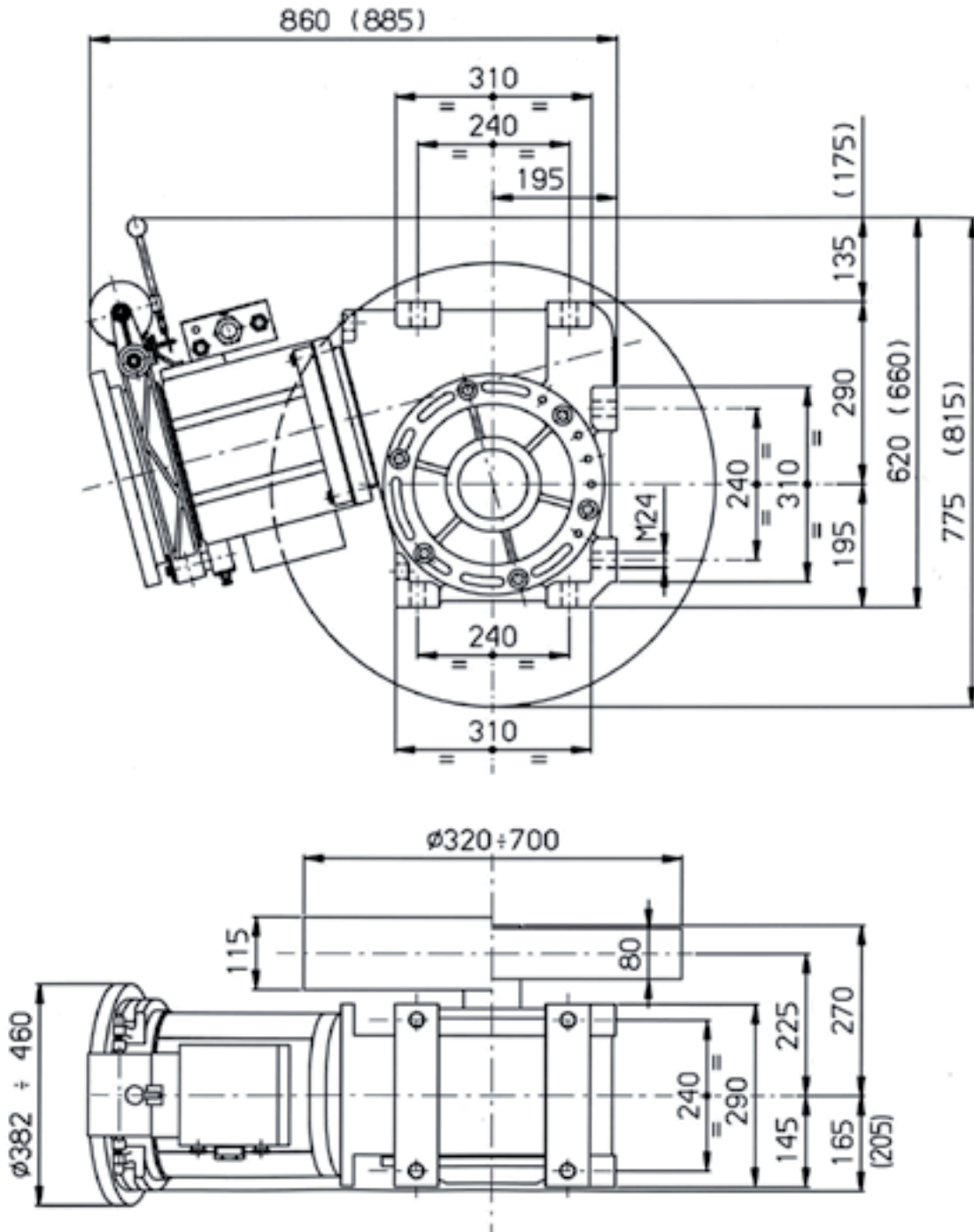
DRAWING

TORO Horizontal right



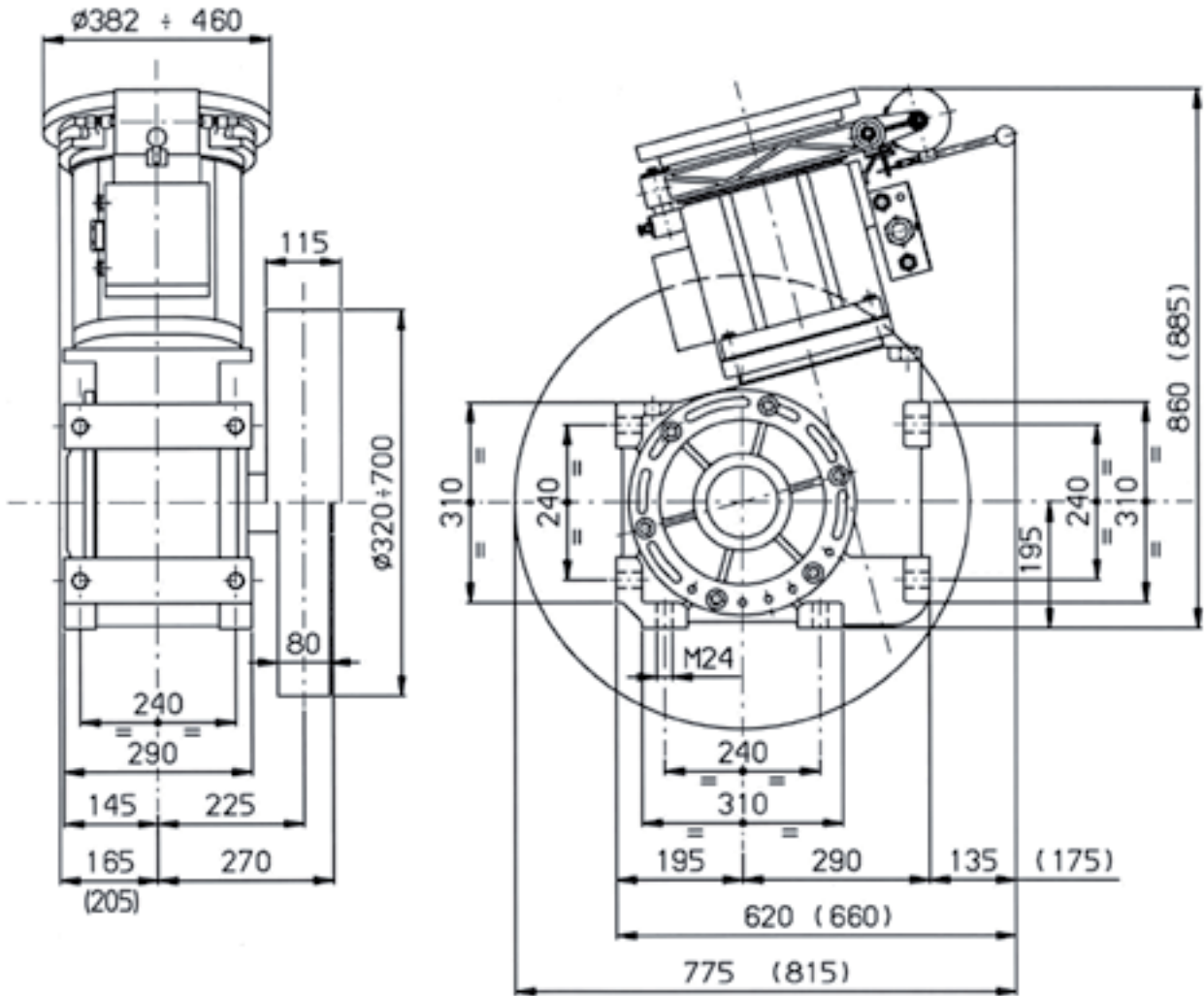
DRAWING

TORO Horizontal left



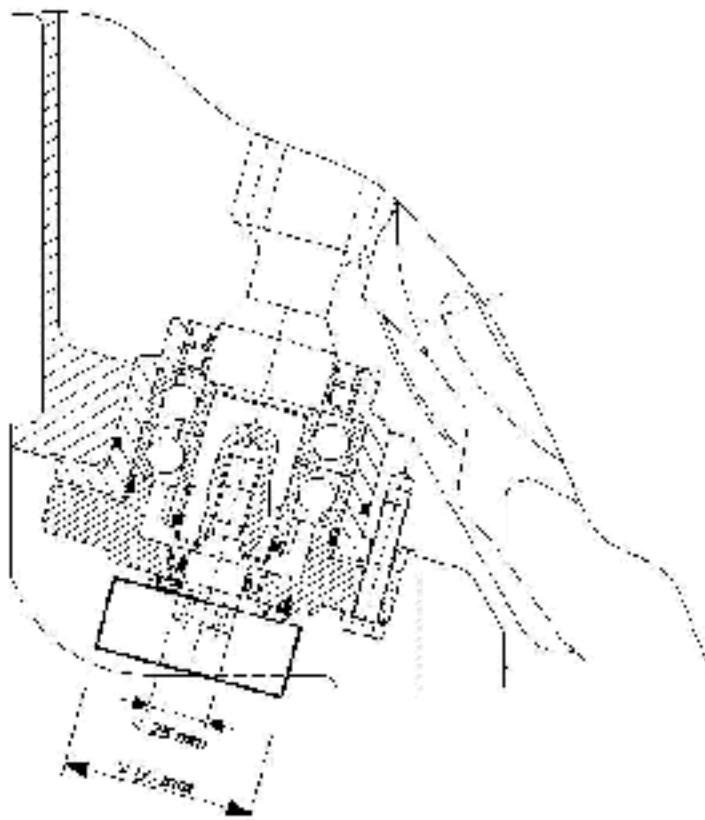
DRAWING

TORO Vertical



DRAWING

TORO Encoder coupling



4/16 - Speed 1500 rpm - Max static load 4200 kg

DUTY TABLE

Out of balance load in kg with shaft efficiency = 0,8

	kW Synchronous								Speed (m/s)	Ratio	Ø Sheave (mm)
	3,5	4,0	4,9	5,5	6,0	7,3	9,2	11,0			
	460	530	660	740	815	1.005	1.100	1.100	0,41	1/61	320
	410	475	585	660	725	895	975	975	0,46	1/61	360
	385	445	550	620	680	835	1.045	1.045	0,51	1/49	320
	370	430	530	595	655	805	880	880	0,51	1/61	400
	340	395	490	555	610	750	935	935	0,57	1/49	360
	330	385	475	535	585	720	790	790	0,57	1/61	450
	310	360	440	500	550	675	740	740	0,61	1/61	480
	315	365	450	510	560	690	870	870	0,64	1/39	320
	305	355	435	495	540	665	840	840	0,64	1/49	400
	285	330	410	460	505	625	685	685	0,66	1/61	520
	280	325	400	450	495	610	770	770	0,72	1/39	360
	270	315	390	440	480	590	710	710	0,72	1/49	450
	260	305	375	420	465	570	630	630	0,72	1/61	560
	255	300	370	415	455	560	670	670	0,76	1/49	480
	245	285	350	395	435	535	590	590	0,77	1/61	600
	250	290	360	405	445	550	695	695	0,80	1/39	400
	235	270	335	380	415	515	620	620	0,83	1/49	520
	225	265	325	365	400	495	545	545	0,83	1/61	650
	220	255	315	355	390	480	575	575	0,89	1/49	560
	225	260	320	360	395	490	615	615	0,90	1/39	450
	210	240	300	340	370	455	500	500	0,90	1/61	700
	225	260	325	365	400	495	620	620	0,94	2/53	320
	210	245	300	340	375	460	580	580	0,96	1/39	480
	205	235	290	330	360	445	535	535	0,96	1/49	600
	195	225	280	315	345	425	535	535	1,04	1/39	520
	185	215	270	305	335	410	510	510	1,04	1/49	650
	200	230	285	325	355	435	550	550	1,06	2/53	360
	180	210	260	290	320	395	495	495	1,12	1/39	560
	175	200	250	280	310	380	460	460	1,12	1/49	700
	180	210	255	290	320	395	495	495	1,18	2/53	400
	170	195	240	270	300	365	465	465	1,20	1/39	600
	155	180	220	250	275	340	425	425	1,30	1/39	650

CONTINUE 

VVVF - Speed 1500 rpm - Max static load 4200 kg

DUTY TABLE

Out of balance load in kg with shaft efficiency = 0,8

kW Synchronous														Speed	Ratio	Ø Sheave
3,3	4,0	4,8	5,9	7,3	9,2	11,0	12,1	13,2	14,7	16,2	17,6	19,1	20,6			
505	618	730	899	1124	1236									0,41	1/61	320
450	551	651	801	1001	1102									0,46	1/61	360
422	516	610	752	940	1175	1278								0,51	1/49	320
406	497	587	723	903	994									0,51	1/61	400
378	462	546	672	841	1051	1144								0,57	1/49	360
363	444	525	646	808	889									0,57	1/61	450
340	415	491	604	755	831									0,61	1/61	480
348	426	504	621	776	971	1165	1242							0,64	1/64	320
336	411	486	599	749	936	1019								0,64	1/49	400
314	384	454	558	698	768									0,66	1/61	520
310	379	448	552	690	863	1035	1104							0,72	1/39	360
299	366	432	532	666	832	905								0,72	1/49	450
288	352	416	512	640	704									0,72	1/61	560
283	347	410	504	631	788	858								0,76	1/49	480
269	329	389	479	598	658									0,77	1/61	600
279	341	403	497	621	776	932	994							0,80	1/39	400
259	317	375	462	577	722	785								0,83	1/49	520
250	305	361	444	555	611									0,83	1/61	650
242	296	350	431	538	673	732								0,89	1/49	560
248	303	358	441	552	690	828	884							0,90	1/39	450
230	281	333	409	512	563									0,90	1/61	700
251	307	363	447	559	699	840	924	1008	1120	1165				0,94	2/53	320
232	284	336	414	517	647	777	828							0,96	1/39	480
224	274	324	399	499	624	679								0,96	1/49	600
214	262	310	382	478	597	717	765							1,04	1/39	520
207	253	299	369	461	576	627								1,04	1/49	650
222	272	322	396	496	620	744	819	894	993	1033				1,06	2/53	360
199	244	288	355	444	555	666	710							1,12	1/39	560
192	235	278	342	428	535	582								1,12	1/49	700
200	244	289	356	445	557	669	736	803	892	928				1,18	2/53	400
186	227	269	331	414	518	621	663							1,20	1/39	600
172	210	248	306	382	478	573	612							1,30	1/39	650

(*) with inverter with feedback only

CONTINUE 

Inverter with feedback: VVVF - 4 poles - Max static load 4200 kg

Speed (m/s)	Sheave (Ø mm)	Ratio	O.B.L. (kg)	rpm	Motor Type	Motor Data			Hz Regul.
						(kWo)	(Nm)	(kW)	
0.5	320	1/49	747	1462	240095A/WF4	5.7	37.5	5.9	48.74
	320	1/49	934	1462	240118A/WF4	7.2	46.8	7.4	48.74
	320	1/49	1270	1462	240142A/WF4	9.8	63.7	10.0	48.74
	360	1/49	657	1300	240095A/WF4	5.1	37.5	5.9	43.33
	360	1/49	822	1300	240118A/WF4	6.4	46.8	7.4	43.33
	360	1/49	1142	1300	240142A/WF4	8.9	65.1	10.2	43.33
	400	1/61	715	1456	240095A/WF4	5.7	37.5	5.9	48.54
	400	1/61	894	1456	240118A/WF4	7.1	46.8	7.4	48.54
	400	1/61	983	1456	240142A/WF4	7.9	51.5	8.1	48.54
450	1/61	629	1294	240095A/WF4	5.1	37.5	5.9	43.15	
450	1/61	786	1294	240118A/WF4	6.3	46.8	7.4	43.15	
450	1/61	865	1294	240142A/WF4	7.0	51.5	8.1	43.15	
0.6	320	1/39	611	1397	240095A/WF4	5.5	37.5	5.9	46.55
	320	1/39	764	1397	240118A/WF4	6.8	46.8	7.4	46.55
	320	1/39	1146	1397	240142A/WF4	10.3	70.3	11.0	46.55
	320	1/39	1230	1397	240171A/WF4	11.0	75.4	11.8	46.55
	320	2/53	432	949	240095A/WF4	3.7	37.5	5.9	31.63
	320	2/53	541	949	240118A/WF4	4.7	46.8	7.4	31.63
	320	2/53	813	949	240142A/WF4	7.0	70.3	11.0	31.63
	320	2/53	976	949	240171A/WF4	8.4	84.3	13.2	31.63
	320	2/53	1074	949	270172A/WF4	9.2	92.7	14.6	31.63
	360	1/39	538	1241	240095A/WF4	4.9	37.5	5.9	41.38
	360	1/39	673	1241	240118A/WF4	6.1	46.8	7.4	41.38
	360	1/39	1010	1241	240142A/WF4	9.1	70.3	11.0	41.38
	360	1/39	1060	1241	240171A/WF4	9.6	73.8	11.6	41.38
	360	1/49	642	1560	240095A/WF4	5.9	36	5.7	51.99
	360	1/49	803	1560	240118A/WF4	7.4	45	7.1	51.99
	360	1/49	1092	1560	240142A/WF4	10.0	61.3	9.6	51.99
	400	1/39	477	1117	240095A/WF4	4.4	37.5	5.9	37.24
	400	1/39	597	1117	240118A/WF4	5.5	46.8	7.4	37.24
	400	1/39	896	1117	240142A/WF4	8.2	70.3	11.0	37.24
	400	1/39	1001	1117	240171A/WF4	9.2	78.5	12.3	37.24
	400	1/49	592	1404	240095A/WF4	5.5	37.5	5.9	46.79
	400	1/49	740	1404	240118A/WF4	6.9	46.8	7.4	46.79
	400	1/49	1028	1404	240142A/WF4	9.6	65.1	10.2	46.79
	450	1/39	424	993	240095A/WF4	3.9	37.5	5.9	33.1
	450	1/39	530	993	240118A/WF4	4.9	46.8	7.4	33.1
	450	1/39	796	993	240142A/WF4	7.3	70.3	11.0	33.1
	450	1/39	852	993	240171A/WF4	7.8	75.2	11.8	33.1
	450	1/49	520	1248	240095A/WF4	4.9	37.5	5.9	41.59
	450	1/49	651	1248	240118A/WF4	6.1	46.8	7.4	41.59
	450	1/49	935	1248	240142A/WF4	8.8	67.3	10.6	41.59
	450	1/61	618	1553	240095A/WF4	5.9	36.2	5.7	51.78
	450	1/61	772	1553	240118A/WF4	7.4	45.2	7.1	51.78
	450	1/61	850	1553	240142A/WF4	8.1	49.8	7.8	51.78
	480	1/39	397	931	240095A/WF4	3.7	37.5	5.9	31.04
	480	1/39	497	931	240118A/WF4	4.6	46.8	7.4	31.04
	480	1/39	746	931	240142A/WF4	6.9	70.3	11.0	31.04
	480	1/39	798	931	240171A/WF4	7.3	75.2	11.8	31.04
	480	1/49	488	1170	240095A/WF4	4.6	37.5	5.9	38.99
	480	1/49	610	1170	240118A/WF4	5.7	46.8	7.4	38.99
	480	1/49	877	1170	240142A/WF4	8.2	67.3	10.6	38.99
	480	1/61	596	1456	240095A/WF4	5.7	37.5	5.9	48.54
	480	1/61	745	1456	240118A/WF4	7.1	46.8	7.4	48.54
	480	1/61	819	1456	240142A/WF4	7.9	51.5	8.1	48.54
	520	1/49	443	1080	240095A/WF4	4.2	37.5	5.9	35.99
	520	1/49	554	1080	240118A/WF4	5.3	46.8	7.4	35.99

CONTINUE 

Inverter with feedback: VVVF - 4 poles - Max static load 4200 kg

Speed (m/s)	Sheave (Ø mm)	Ratio	O.B.L. (kg)	rpm	Motor Type	Motor Data			Hz Regul.
						(kWo)	(Nm)	(kW)	
0.6	520	1/49	798	1080	240142A/WF4	7.6	67.4	10.6	35.99
	520	1/61	544	1344	240095A/WF4	5.3	37.5	5.9	44.81
	520	1/61	690	1344	240118A/WF4	6.6	46.8	7.4	44.81
	520	1/61	748	1344	240142A/WF4	7.2	51.5	8.1	44.81
560	560	1/49	411	1003	240095A/WF4	3.9	37.5	5.9	33.42
	560	1/49	534	1003	240118A/WF4	4.9	46.8	7.4	33.42
	560	1/49	741	1003	240142A/WF4	7.1	67.4	10.6	33.42
	560	1/61	499	1248	240095A/WF4	4.9	37.5	5.9	41.61
	560	1/61	624	1248	240118A/WF4	6.1	46.8	7.4	41.61
	560	1/61	725	1248	240142A/WF4	7.1	54.5	8.6	41.61
600	600	1/49	384	936	240095A/WF4	3.7	37.5	5.9	31.19
	600	1/49	480	936	240118A/WF4	4.6	46.8	7.4	31.19
	600	1/49	691	936	240142A/WF4	6.6	67.4	10.6	31.19
	600	1/61	466	1165	240095A/WF4	4.6	37.5	5.9	38.83
	600	1/61	582	1165	240118A/WF4	5.7	46.8	7.4	38.83
	600	1/61	677	1165	240142A/WF4	6.6	54.5	8.6	38.83
650	650	1/61	422	1075	240095A/WF4	4.2	37.5	5.9	35.85
	650	1/61	528	1075	240118A/WF4	5.3	46.8	7.4	35.85
	650	1/61	681	1075	240142A/WF4	6.8	60.4	9.5	35.85
700	700	1/61	392	999	240095A/WF4	3.9	37.5	5.9	33.29
	700	1/61	490	999	240118A/WF4	4.9	46.8	7.4	33.29
	700	1/61	617	999	240142A/WF4	6.2	59	9.3	33.29
0.8	320	2/53	437	1265	240095A/WF4	5.0	37.5	5.9	42.18
	320	2/53	547	1265	240118A/WF4	6.2	46.8	7.4	42.18
	320	2/53	821	1265	240142A/WF4	9.3	70.3	11.0	42.18
	320	2/53	986	1265	240171A/WF4	11.2	84.3	13.2	42.18
	320	2/53	1155	1265	270172A/WF4	13.1	98.8	15.5	42.18
360	360	2/53	384	1125	240095A/WF4	4.4	37.5	5.9	37.49
	360	2/53	481	1125	240118A/WF4	5.5	46.8	7.4	37.49
	360	2/53	723	1125	240142A/WF4	8.3	70.3	11.0	37.49
	360	2/53	868	1125	240171A/WF4	9.9	84.3	13.2	37.49
	360	2/53	976	1125	270172A/WF4	11.2	94.8	14.9	37.49
400	400	1/39	492	1490	240095A/WF4	5.9	37.5	5.9	49.66
	400	1/39	616	1490	240118A/WF4	7.3	46.8	7.4	49.66
	400	1/39	925	1490	240142A/WF4	11.0	70.3	11.0	49.66
	400	1/39	987	1490	240171A/WF4	11.7	74.9	11.8	49.66
	400	2/53	346	1012	240095A/WF4	4.0	37.5	5.9	33.74
	400	2/53	433	1012	240118A/WF4	5.0	46.8	7.4	33.74
	400	2/53	651	1012	240142A/WF4	7.5	70.3	11.0	33.74
	400	2/53	781	1012	240171A/WF4	8.9	84.3	13.2	33.74
	400	2/53	859	1012	270172A/WF4	9.8	92.7	14.6	33.74
	450	450	1/39	434	1324	240095A/WF4	5.2	37.5	5.9
450		1/39	543	1324	240118A/WF4	6.5	46.8	7.4	44.14
450		1/39	815	1324	240142A/WF4	9.7	70.3	11.0	44.14
450		1/39	864	1324	240171A/WF4	10.3	74.4	11.7	44.14
450		2/53	304	900	240095A/WF4	3.5	37.5	5.9	29.99
450		2/53	380	900	240118A/WF4	4.4	46.8	7.4	29.99
450		2/53	571	900	240142A/WF4	6.6	70.3	11.0	29.99
450		2/53	686	900	240171A/WF4	7.9	84.3	13.2	29.99
450		2/53	804	900	270172A/WF4	9.3	98.8	15.5	29.99
480		480	1/39	403	1241	240095A/WF4	4.9	37.5	5.9
	480	1/39	504	1241	240118A/WF4	6.1	46.8	7.4	41.38
	480	1/39	757	1241	240142A/WF4	9.1	70.3	11.0	41.38
	480	1/39	795	1241	240171A/WF4	9.6	73.8	11.6	41.38
	480	1/49	481	1560	240095A/WF4	5.9	36	5.7	51.99
	480	1/49	602	1560	240118A/WF4	7.4	45	7.1	51.99
	480	1/49	879	1560	240142A/WF4	10.0	61.3	9.6	51.99

CONTINUE 

Inverter with feedback: VVVF - 4 poles - Max static load 4200 kg

Speed (m/s)	Sheave (Ø mm)	Ratio	O.B.L. (kg)	rpm	Motor Type	Motor Data			Hz Regul.
						(kWo)	(Nm)	(kW)	
0.8	520	1/39	367	1146	240095A/WF4	4.5	37.5	5.9	38.2
	520	1/39	459	1146	240118A/WF4	5.6	46.8	7.4	38.2
	520	1/39	689	1146	240142A/WF4	8.4	70.3	11.0	38.2
	520	1/39	789	1146	240171A/WF4	9.7	80.5	12.6	38.2
	520	1/49	459	1440	240095A/WF4	5.7	37.5	5.9	47.99
	520	1/49	574	1440	240118A/WF4	7.1	46.8	7.4	47.99
	520	1/49	782	1440	240142A/WF4	9.6	63.7	10.0	47.99
	560	1/39	340	1064	240095A/WF4	4.2	37.5	5.9	35.47
	560	1/39	426	1064	240118A/WF4	5.2	46.8	7.4	35.47
	560	1/39	640	1064	240142A/WF4	7.8	70.3	11.0	35.47
	560	1/39	684	1064	240171A/WF4	8.4	75.2	11.8	35.47
	560	1/49	422	1337	240095A/WF4	5.3	37.5	5.9	44.56
560	1/49	528	1337	240118A/WF4	6.6	46.8	7.4	44.56	
560	1/49	734	1337	240142A/WF4	9.1	65.1	10.2	44.56	
600	1/39	318	993	240095A/WF4	3.9	37.5	5.9	33.1	
600	1/39	398	993	240118A/WF4	4.9	46.8	7.4	33.1	
600	1/39	597	993	240142A/WF4	7.3	70.3	11.0	33.1	
600	1/39	639	993	240171A/WF4	7.8	75.2	11.8	33.1	
600	1/49	390	1248	240095A/WF4	4.9	37.5	5.9	41.59	
600	1/49	488	1248	240118A/WF4	6.1	46.8	7.4	41.59	
600	1/49	701	1248	240142A/WF4	8.8	67.3	10.6	41.59	
600	1/61	463	1553	240095A/WF4	5.9	36.2	5.7	51.78	
600	1/61	579	1553	240118A/WF4	7.4	45.2	7.1	51.78	
600	1/61	637	1553	240142A/WF4	8.1	49.8	7.8	51.78	
650	1/39	293	917	240095A/WF4	3.6	37.5	5.9	30.56	
650	1/39	367	917	240118A/WF4	4.5	46.8	7.4	30.56	
650	1/39	551	917	240142A/WF4	6.8	70.3	11.0	30.56	
650	1/39	589	917	240171A/WF4	7.2	75.2	11.8	30.56	
650	1/49	360	1152	240095A/WF4	4.5	37.5	5.9	38.39	
650	1/49	450	1152	240118A/WF4	5.6	46.8	7.4	38.39	
650	1/49	647	1152	240142A/WF4	8.1	67.3	10.6	38.39	
650	1/61	440	1434	240095A/WF4	5.6	37.5	5.9	47.8	
650	1/61	550	1434	240118A/WF4	7.0	46.8	7.4	47.8	
650	1/61	605	1434	240142A/WF4	7.7	51.5	8.1	47.8	
700	1/49	329	1070	240095A/WF4	4.2	37.5	5.9	35.65	
700	1/49	411	1070	240118A/WF4	5.2	46.8	7.4	35.65	
700	1/49	592	1070	240142A/WF4	7.6	67.4	10.6	35.65	
700	1/61	404	1331	240095A/WF4	5.2	37.5	5.9	44.38	
700	1/61	505	1331	240118A/WF4	6.5	46.8	7.4	44.38	
700	1/61	556	1331	240142A/WF4	7.2	51.5	8.1	44.38	
1.0	320	2/53	421	1582	240095A/WF4	5.9	35.5	5.6	52.72
	320	2/53	527	1582	240118A/WF4	7.4	44.4	7.0	52.72
	320	2/53	791	1582	240142A/WF4	11.0	66.6	10.5	52.72
	320	2/53	950	1582	240171A/WF4	13.3	80	12.6	52.72
	320	2/53	1098	1582	270172A/WF4	15.3	92.4	14.5	52.72
	320	3/47	268	935	240095A/WF4	3.7	37.5	5.9	31.17
	320	3/47	336	935	240118A/WF4	4.6	46.8	7.4	31.17
	320	3/47	504	935	240142A/WF4	6.9	70.3	11.0	31.17
	320	3/47	606	935	240171A/WF4	8.3	84.3	13.2	31.17
	320	3/47	808	935	270172A/WF4	11.0	112.4	17.7	31.17
	320	3/47	940	935	270196A/WF4	12.8	130.7	20.5	31.17
	360	2/53	391	1406	240095A/WF4	5.5	37.5	5.9	46.86
	360	2/53	489	1406	240118A/WF4	6.9	46.8	7.4	46.86
	360	2/53	735	1406	240142A/WF4	10.4	70.3	11.0	46.86
	360	2/53	882	1406	240171A/WF4	12.4	84.3	13.2	46.86
	360	2/53	1021	1406	270172A/WF4	14.4	97.6	15.3	46.86
	400	2/53	350	1265	240095A/WF4	5.0	37.5	5.9	42.18
	400	2/53	438	1265	240118A/WF4	6.2	46.8	7.4	42.18
	400	2/53	657	1265	240142A/WF4	9.3	70.3	11.0	42.18

CONTINUE 

Inverter with feedback: VVVF - 4 poles - Max static load 4200 kg

Speed (m/s)	Sheave (Ø mm)	Ratio	O.B.L. (kg)	rpm	Motor Type	Motor Data			Hz Regul.
						(kWo)	(Nm)	(kW)	
1.0	400	2/53	789	1265	240171A/WF4	11.2	84.3	13.2	42.18
	400	2/53	924	1265	270172A/WF4	13.1	98.8	15.5	42.18
450	450	2/53	307	1125	240095A/WF4	4.4	37.5	5.9	37.49
	450	2/53	385	1125	240118A/WF4	5.5	46.8	7.4	37.49
	450	2/53	578	1125	240142A/WF4	8.3	70.3	11.0	37.49
	450	2/53	694	1125	240171A/WF4	9.9	84.3	13.2	37.49
	450	2/53	781	1125	270172A/WF4	11.2	94.8	14.9	37.49
	480	1/39	399	1552	240095A/WF4	5.9	36.2	5.7	51.73
480	1/39	499	1552	240118A/WF4	7.4	45.3	7.1	51.73	
480	1/39	749	1552	240142A/WF4	11.0	67.9	10.7	51.73	
480	1/39	799	1552	240171A/WF4	11.8	72.4	11.4	51.73	
480	2/53	288	1054	240095A/WF4	4.1	37.5	5.9	35.15	
480	2/53	361	1054	240118A/WF4	5.2	46.8	7.4	35.15	
480	2/53	542	1054	240142A/WF4	7.8	70.3	11.0	35.15	
480	2/53	651	1054	240171A/WF4	9.3	84.3	13.2	35.15	
480	2/53	716	1054	270172A/WF4	10.2	92.7	14.6	35.15	
520	520	1/39	379	1432	240095A/WF4	5.6	37.5	5.9	47.75
	520	1/39	474	1432	240118A/WF4	7.0	46.8	7.4	47.75
	520	1/39	711	1432	240142A/WF4	10.5	70.3	11.0	47.75
	520	1/39	759	1432	240171A/WF4	11.2	74.9	11.8	47.75
	520	2/53	266	973	240095A/WF4	3.8	37.5	5.9	32.44
	520	2/53	333	973	240118A/WF4	4.8	46.8	7.4	32.44
	520	2/53	500	973	240142A/WF4	7.2	70.3	11.0	32.44
	520	2/53	600	973	240171A/WF4	8.6	84.3	13.2	32.44
	520	2/53	661	973	270172A/WF4	9.4	92.7	14.6	32.44
	560	1/39	349	1330	240095A/WF4	5.2	37.5	5.9	44.34
560	1/39	436	1330	240118A/WF4	6.5	46.8	7.4	44.34	
560	1/39	655	1330	240142A/WF4	9.8	70.3	11.0	44.34	
560	1/39	694	1330	240171A/WF4	10.4	74.4	11.7	44.34	
560	2/53	247	904	240095A/WF4	3.6	37.5	5.9	30.13	
560	2/53	309	904	240118A/WF4	4.4	46.8	7.4	30.13	
560	2/53	464	904	240142A/WF4	6.7	70.3	11.0	30.13	
560	2/53	558	904	240171A/WF4	8.0	84.3	13.2	30.13	
560	2/53	613	904	270172A/WF4	8.8	92.7	14.6	30.13	
600	600	1/39	322	1241	240095A/WF4	4.9	37.5	5.9	41.38
	600	1/39	403	1241	240118A/WF4	6.1	46.8	7.4	41.38
	600	1/39	606	1241	240142A/WF4	9.1	70.3	11.0	41.38
	600	1/39	636	1241	240171A/WF4	9.6	73.8	11.6	41.38
	600	1/49	385	1560	240095A/WF4	5.9	36	5.7	51.99
	600	1/49	482	1560	240118A/WF4	7.4	45	7.1	51.99
	600	1/49	655	1560	240142A/WF4	10.0	61.3	9.6	51.99
	600	2/53	228	844	240095A/WF4	3.3	37.5	5.9	28.12
	600	2/53	285	844	240118A/WF4	4.1	46.8	7.4	28.12
	600	2/53	428	844	240142A/WF4	6.2	70.3	11.0	28.12
	600	2/53	514	844	240171A/WF4	7.5	84.3	13.2	28.12
	600	2/53	573	844	270172A/WF4	8.3	94	14.8	28.12
650	650	1/39	293	1146	240095A/WF4	4.5	37.5	5.9	38.2
	650	1/39	367	1146	240118A/WF4	5.6	46.8	7.4	38.2
	650	1/39	551	1146	240142A/WF4	8.4	70.3	11.0	38.2
	650	1/39	631	1146	240171A/WF4	9.7	80.5	12.6	38.2
	650	1/49	367	1440	240095A/WF4	5.7	37.5	5.9	47.99
	650	1/49	459	1440	240118A/WF4	7.1	46.8	7.4	47.99
	650	1/49	625	1440	240142A/WF4	9.6	63.7	10.0	47.99
	700	1/39	272	1064	240095A/WF4	4.2	37.5	5.9	35.47
700	1/39	341	1064	240118A/WF4	5.2	46.8	7.4	35.47	
700	1/39	512	1064	240142A/WF4	7.8	70.3	11.0	35.47	
700	1/39	547	1064	240171A/WF4	8.4	75.2	11.8	35.47	
700	1/49	338	1337	240095A/WF4	5.3	37.5	5.9	44.56	
700	1/49	423	1337	240118A/WF4	6.6	46.8	7.4	44.56	

CONTINUE 

Inverter with feedback: VVVF - 4 poles - Max static load 4200 kg

Speed (m/s)	Sheave (Ø mm)	Ratio	O.B.L. (kg)	rpm	Motor Type	Motor Data			Hz Regul.
						(kWo)	(Nm)	(kW)	
1.0	700	1/49	587	1337	240142A/WF4	9.1	65.1	10.2	44.56
1.2	320	3/47	268	1122	240095A/WF4	4.4	37.5	5.9	37.4
	320	3/47	336	1122	240118A/WF4	5.5	46.8	7.4	37.4
	320	3/47	505	1122	240142A/WF4	8.3	70.3	11.0	37.4
	320	3/47	606	1122	240171A/WF4	9.9	84.3	13.2	37.4
	320	3/47	809	1122	270172A/WF4	13.2	112.4	17.7	37.4
	320	3/47	944	1122	270196A/WF4	15.4	131.2	20.6	37.4
360	360	3/47	238	997	240095A/WF4	3.9	37.5	5.9	33.25
	360	3/47	298	997	240118A/WF4	4.9	46.8	7.4	33.25
	360	3/47	448	997	240142A/WF4	7.3	70.3	11.0	33.25
	360	3/47	538	997	240171A/WF4	8.8	84.3	13.2	33.25
	360	3/47	719	997	270172A/WF4	11.7	112.4	17.7	33.25
	360	3/47	836	997	270196A/WF4	13.6	130.7	20.5	33.25
400	400	2/53	350	1518	240095A/WF4	5.9	37	5.8	50.61
	400	2/53	437	1518	240118A/WF4	7.4	46.3	7.3	50.61
	400	2/53	657	1518	240142A/WF4	11.0	69.4	10.9	50.61
	400	2/53	789	1518	240171A/WF4	13.2	83.3	13.1	50.61
	400	2/53	921	1518	270172A/WF4	15.5	97.4	15.3	50.61
	400	3/47	213	898	240095A/WF4	3.5	37.5	5.9	29.92
	400	3/47	266	898	240118A/WF4	4.4	46.8	7.4	29.92
	400	3/47	400	898	240142A/WF4	6.6	70.3	11.0	29.92
	400	3/47	481	898	240171A/WF4	7.9	84.3	13.2	29.92
	400	3/47	641	898	270172A/WF4	10.6	112.4	17.7	29.92
	400	3/47	748	898	270196A/WF4	12.3	131.2	20.6	29.92
	450	450	2/53	313	1350	240095A/WF4	5.3	37.5	5.9
450		2/53	391	1350	240118A/WF4	6.6	46.8	7.4	44.99
450		2/53	588	1350	240142A/WF4	9.9	70.3	11.0	44.99
450		2/53	706	1350	240171A/WF4	11.9	84.3	13.2	44.99
450		2/53	815	1350	270172A/WF4	13.8	97.3	15.3	44.99
450		3/47	189	798	240095A/WF4	3.1	37.5	5.9	26.6
450		3/47	236	798	240118A/WF4	3.9	46.8	7.4	26.6
450		3/47	355	798	240142A/WF4	5.9	70.3	11.0	26.6
450		3/47	427	798	240171A/WF4	7.0	84.3	13.2	26.6
450		3/47	570	798	270172A/WF4	9.4	112.4	17.7	26.6
450		3/47	665	798	270196A/WF4	11.0	131.2	20.6	26.6
480		480	2/53	291	1265	240095A/WF4	5.0	37.5	5.9
	480	2/53	365	1265	240118A/WF4	6.2	46.8	7.4	42.18
	480	2/53	547	1265	240142A/WF4	9.3	70.3	11.0	42.18
	480	2/53	657	1265	240171A/WF4	11.2	84.3	13.2	42.18
	480	2/53	770	1265	270172A/WF4	13.1	98.8	15.5	42.18
520	520	2/53	269	1168	240095A/WF4	4.6	37.5	5.9	38.93
	520	2/53	336	1168	240118A/WF4	5.7	46.8	7.4	38.93
	520	2/53	505	1168	240142A/WF4	8.6	70.3	11.0	38.93
	520	2/53	607	1168	240171A/WF4	10.3	84.3	13.2	38.93
	520	2/53	704	1168	270172A/WF4	12.0	97.8	15.4	38.93
560	560	1/39	332	1596	240095A/WF4	5.9	35.2	5.5	53.2
	560	1/39	416	1596	240118A/WF4	7.4	44	6.9	53.2
	560	1/39	624	1596	240142A/WF4	11.0	66	10.4	53.2
	560	1/39	666	1596	240171A/WF4	11.8	70.4	11.1	53.2
	560	2/53	247	1085	240095A/WF4	4.3	37.5	5.9	36.15
	560	2/53	309	1085	240118A/WF4	5.3	46.8	7.4	36.15
	560	2/53	465	1085	240142A/WF4	8.0	70.3	11.0	36.15
	560	2/53	558	1085	240171A/WF4	9.6	84.3	13.2	36.15
	560	2/53	614	1085	270172A/WF4	10.5	92.7	14.6	36.15
	600	600	1/39	328	1490	240095A/WF4	5.9	37.5	5.9
600		1/39	411	1490	240118A/WF4	7.3	46.8	7.4	49.66
600		1/39	616	1490	240142A/WF4	11.0	70.3	11.0	49.66
600		1/39	658	1490	240171A/WF4	11.7	74.9	11.8	49.66

CONTINUE 

Inverter with feedback: VVVF - 4 poles - Max static load 4200 kg

Speed (m/s)	Sheave (Ø mm)	Ratio	O.B.L. (kg)	rpm	Motor Type	Motor Data			Hz Regul.
						(kWo)	(Nm)	(kW)	
1.2	600	2/53	230	1012	240095A/WF4	4.0	37.5	5.9	33.74
	600	2/53	289	1012	240118A/WF4	5.0	46.8	7.4	33.74
	600	2/53	434	1012	240142A/WF4	7.5	70.3	11.0	33.74
	600	2/53	520	1012	240171A/WF4	8.9	84.3	13.2	33.74
	600	2/53	573	1012	270172A/WF4	9.8	92.7	14.6	33.74
	650	1/39	300	1375	240095A/WF4	5.4	37.5	5.9	45.84
	650	1/39	376	1375	240118A/WF4	6.7	46.8	7.4	45.84
	650	1/39	564	1375	240142A/WF4	10.1	70.3	11.0	45.84
	650	1/39	598	1375	240171A/WF4	10.7	74.4	11.7	45.84
	650	2/53	213	934	240095A/WF4	3.7	37.5	5.9	31.15
	650	2/53	266	934	240118A/WF4	4.6	46.8	7.4	31.15
	650	2/53	400	934	240142A/WF4	6.9	70.3	11.0	31.15
	650	2/53	480	934	240171A/WF4	8.2	84.3	13.2	31.15
	650	2/53	528	934	270172A/WF4	9.1	92.7	14.6	31.15
	700	1/39	279	1277	240095A/WF4	5.0	37.5	5.9	42.56
700	1/39	349	1277	240118A/WF4	6.3	46.8	7.4	42.56	
700	1/39	524	1277	240142A/WF4	9.4	70.3	11.0	42.56	
700	1/39	555	1277	240171A/WF4	9.9	74.4	11.7	42.56	
700	2/53	195	868	240095A/WF4	3.4	37.5	5.9	28.92	
700	2/53	244	868	240118A/WF4	4.3	46.8	7.4	28.92	
700	2/53	367	868	240142A/WF4	6.4	70.3	11.0	28.92	
700	2/53	441	868	240171A/WF4	7.7	84.3	13.2	28.92	
700	2/53	498	868	270172A/WF4	8.7	95.2	15.0	28.92	
1.5	320	3/47	271	1403	240095A/WF4	5.5	37.5	5.9	46.75
	320	3/47	339	1403	240118A/WF4	6.9	46.8	7.4	46.75
	320	3/47	510	1403	240142A/WF4	10.3	70.3	11.0	46.75
	320	3/47	613	1403	240171A/WF4	12.4	84.3	13.2	46.75
	320	3/47	818	1403	270172A/WF4	16.5	112.4	17.7	46.75
	320	3/47	955	1403	270196A/WF4	19.3	131.2	20.6	46.75
	360	3/47	240	1247	240095A/WF4	4.9	37.5	5.9	41.56
	360	3/47	300	1247	240118A/WF4	6.1	46.8	7.4	41.56
	360	3/47	452	1247	240142A/WF4	9.2	70.3	11.0	41.56
	360	3/47	542	1247	240171A/WF4	11.0	84.3	13.2	41.56
	360	3/47	724	1247	270172A/WF4	14.7	112.4	17.7	41.56
	360	3/47	845	1247	270196A/WF4	17.1	131.2	20.6	41.56
	400	3/47	214	1122	240095A/WF4	4.4	37.5	5.9	37.4
	400	3/47	268	1122	240118A/WF4	5.5	46.8	7.4	37.4
	400	3/47	404	1122	240142A/WF4	8.3	70.3	11.0	37.4
	400	3/47	485	1122	240171A/WF4	9.9	84.3	13.2	37.4
	400	3/47	647	1122	270172A/WF4	13.2	112.4	17.7	37.4
	400	3/47	755	1122	270196A/WF4	15.4	131.2	20.6	37.4
	450	3/47	190	997	240095A/WF4	3.9	37.5	5.9	33.25
	450	3/47	238	997	240118A/WF4	4.9	46.8	7.4	33.25
	450	3/47	358	997	240142A/WF4	7.3	70.3	11.0	33.25
	450	3/47	431	997	240171A/WF4	8.8	84.3	13.2	33.25
	450	3/47	575	997	270172A/WF4	11.7	112.4	17.7	33.25
	450	3/47	668	997	270196A/WF4	13.6	130.7	20.5	33.25
	480	2/53	281	1582	240095A/WF4	5.9	35.5	5.6	52.72
	480	2/53	351	1582	240118A/WF4	7.4	44.4	7.0	52.72
	480	2/53	527	1582	240142A/WF4	11.0	66.6	10.5	52.72
	480	2/53	633	1582	240171A/WF4	13.3	80	12.6	52.72
	480	2/53	732	1582	270172A/WF4	15.3	92.4	14.5	52.72
	480	3/47	178	935	240095A/WF4	3.7	37.5	5.9	31.17
480	3/47	224	935	240118A/WF4	4.6	46.8	7.4	31.17	
480	3/47	336	935	240142A/WF4	6.9	70.3	11.0	31.17	
480	3/47	404	935	240171A/WF4	8.3	84.3	13.2	31.17	
480	3/47	539	935	270172A/WF4	11.0	112.4	17.7	31.17	
480	3/47	627	935	270196A/WF4	12.8	130.7	20.5	31.17	

CONTINUE 

Inverter with feedback: VVVF - 4 poles - Max static load 4200 kg

Speed (m/s)	Sheave (Ø mm)	Ratio	O.B.L. (kg)	rpm	Motor Type	Motor Data			Hz Regul.
						(kWo)	(Nm)	(kW)	
1.5	520	2/53	272	1460	240095A/WF4	5.7	375	5.9	48.66
	520	2/53	340	1460	240118A/WF4	7.2	46.8	7.4	48.66
	520	2/53	512	1460	240142A/WF4	10.7	70.3	11.0	48.66
	520	2/53	614	1460	240171A/WF4	12.9	84.3	13.2	48.66
	520	2/53	710	1460	270172A/WF4	14.9	97.4	15.3	48.66
	520	3/47	163	863	240095A/WF4	3.4	375	5.9	28.77
	520	3/47	204	863	240118A/WF4	4.2	46.8	7.4	28.77
	520	3/47	308	863	240142A/WF4	6.4	70.3	11.0	28.77
	520	3/47	370	863	240171A/WF4	7.6	84.3	13.2	28.77
	520	3/47	493	863	270172A/WF4	10.2	112.4	17.7	28.77
	520	3/47	576	863	270196A/WF4	11.9	131.2	20.6	28.77
	560	2/53	251	1356	240095A/WF4	5.3	375	5.9	45.19
560	2/53	314	1356	240118A/WF4	6.6	46.8	7.4	45.19	
560	2/53	472	1356	240142A/WF4	10.0	70.3	11.0	45.19	
560	2/53	567	1356	240171A/WF4	12.0	84.3	13.2	45.19	
560	2/53	655	1356	270172A/WF4	13.8	97.3	15.3	45.19	
560	3/47	152	801	240095A/WF4	3.1	375	5.9	26.72	
560	3/47	190	801	240118A/WF4	3.9	46.8	7.4	26.72	
560	3/47	286	801	240142A/WF4	5.9	70.3	11.0	26.72	
560	3/47	343	801	240171A/WF4	7.1	84.3	13.2	26.72	
560	3/47	458	801	270172A/WF4	9.4	112.4	17.7	26.72	
560	3/47	534	801	270196A/WF4	11.0	131.2	20.6	26.72	
600	2/53	233	1265	240095A/WF4	5.0	375	5.9	42.18	
600	2/53	292	1265	240118A/WF4	6.2	46.8	7.4	42.18	
600	2/53	438	1265	240142A/WF4	9.3	70.3	11.0	42.18	
600	2/53	526	1265	240171A/WF4	11.2	84.3	13.2	42.18	
600	2/53	616	1265	270172A/WF4	13.1	98.8	15.5	42.18	
650	2/53	215	1168	240095A/WF4	4.6	375	5.9	38.93	
650	2/53	269	1168	240118A/WF4	5.7	46.8	7.4	38.93	
650	2/53	404	1168	240142A/WF4	8.6	70.3	11.0	38.93	
650	2/53	485	1168	240171A/WF4	10.3	84.3	13.2	38.93	
650	2/53	563	1168	270172A/WF4	12.0	97.8	15.4	38.93	
700	2/53	197	1085	240095A/WF4	4.3	375	5.9	36.15	
700	2/53	247	1085	240118A/WF4	5.3	46.8	7.4	36.15	
700	2/53	372	1085	240142A/WF4	8.0	70.3	11.0	36.15	
700	2/53	446	1085	240171A/WF4	9.6	84.3	13.2	36.15	
700	2/53	491	1085	270172A/WF4	10.5	92.7	14.6	36.15	
1.6	320	3/47	272	1496	240095A/WF4	5.9	375	5.9	49.87
	320	3/47	340	1496	240118A/WF4	7.3	46.8	7.4	49.87
	320	3/47	512	1496	240142A/WF4	11.0	70.3	11.0	49.87
	320	3/47	615	1496	240171A/WF4	13.2	84.3	13.2	49.87
	320	3/47	821	1496	270172A/WF4	17.6	112.4	17.7	49.87
	320	3/47	958	1496	270196A/WF4	20.6	131.2	20.6	49.87
	360	3/47	241	1330	240095A/WF4	5.2	375	5.9	44.33
	360	3/47	302	1330	240118A/WF4	6.5	46.8	7.4	44.33
	360	3/47	453	1330	240142A/WF4	9.8	70.3	11.0	44.33
	360	3/47	545	1330	240171A/WF4	11.7	84.3	13.2	44.33
	360	3/47	727	1330	270172A/WF4	15.7	112.4	17.7	44.33
	360	3/47	848	1330	270196A/WF4	18.3	131.2	20.6	44.33
400	3/47	216	1197	240095A/WF4	4.7	375	5.9	39.89	
400	3/47	270	1197	240118A/WF4	5.9	46.8	7.4	39.89	
400	3/47	406	1197	240142A/WF4	8.8	70.3	11.0	39.89	
400	3/47	488	1197	240171A/WF4	10.6	84.3	13.2	39.89	
400	3/47	651	1197	270172A/WF4	14.1	112.4	17.7	39.89	
400	3/47	760	1197	270196A/WF4	16.4	131.2	20.6	39.89	
450	3/47	190	1064	240095A/WF4	4.2	375	5.9	35.46	
450	3/47	238	1064	240118A/WF4	5.2	46.8	7.4	35.46	
450	3/47	359	1064	240142A/WF4	7.8	70.3	11.0	35.46	

CONTINUE 

Inverter with feedback: VVVF - 4 poles - Max static load 4200 kg

Speed (m/s)	Sheave (Ø mm)	Ratio	O.B.L. (kg)	rpm	Motor Type	Motor Data			Hz Regul.
						(kWo)	(Nm)	(kW)	
1.6	450	3/47	431	1064	240171A/WF4	9.4	84.3	13.2	35.46
	450	3/47	575	1064	270172A/WF4	12.5	112.4	17.7	35.46
	450	3/47	671	1064	270196A/WF4	14.6	131.2	20.6	35.46
	480	3/47	178	997	240095A/WF4	3.9	37.5	5.9	33.25
	480	3/47	224	997	240118A/WF4	4.9	46.8	7.4	33.25
	480	3/47	336	997	240142A/WF4	7.3	70.3	11.0	33.25
	480	3/47	404	997	240171A/WF4	8.8	84.3	13.2	33.25
	480	3/47	539	997	270172A/WF4	11.7	112.4	17.7	33.25
	480	3/47	627	997	270196A/WF4	13.6	130.7	20.5	33.25
	520	2/53	263	1557	240095A/WF4	5.9	36.1	5.7	51.91
	520	2/53	329	1557	240118A/WF4	7.4	45.1	7.1	51.91
	520	2/53	494	1557	240142A/WF4	11.0	67.7	10.6	51.91
	520	2/53	594	1557	240171A/WF4	13.2	81.2	12.8	51.91
	520	2/53	686	1557	270172A/WF4	15.3	93.8	14.7	51.91
	520	3/47	164	921	240095A/WF4	3.6	37.5	5.9	30.69
	520	3/47	206	921	240118A/WF4	4.5	46.8	7.4	30.69
	520	3/47	310	921	240142A/WF4	6.8	70.3	11.0	30.69
	520	3/47	372	921	240171A/WF4	8.1	84.3	13.2	30.69
520	3/47	497	921	270172A/WF4	10.8	112.4	17.7	30.69	
520	3/47	578	921	270196A/WF4	12.6	130.7	20.5	30.69	
560	2/53	252	1446	240095A/WF4	5.7	37.5	5.9	48.2	
560	2/53	316	1446	240118A/WF4	7.1	46.8	7.4	48.2	
560	2/53	475	1446	240142A/WF4	10.6	70.3	11.0	48.2	
560	2/53	570	1446	240171A/WF4	12.8	84.3	13.2	48.2	
560	2/53	659	1446	270172A/WF4	14.7	97.4	15.3	48.2	
560	3/47	152	855	240095A/WF4	3.4	37.5	5.9	28.5	
560	3/47	190	855	240118A/WF4	4.2	46.8	7.4	28.5	
560	3/47	286	855	240142A/WF4	6.3	70.3	11.0	28.5	
560	3/47	343	855	240171A/WF4	7.5	84.3	13.2	28.5	
560	3/47	458	855	270172A/WF4	10.1	112.4	17.7	28.5	
560	3/47	534	855	270196A/WF4	11.7	131.2	20.6	28.5	
600	2/53	234	1350	240095A/WF4	5.3	37.5	5.9	44.99	
600	2/53	293	1350	240118A/WF4	6.6	46.8	7.4	44.99	
600	2/53	441	1350	240142A/WF4	9.9	70.3	11.0	44.99	
600	2/53	529	1350	240171A/WF4	11.9	84.3	13.2	44.99	
600	2/53	611	1350	270172A/WF4	13.8	97.3	15.3	44.99	
600	3/47	142	798	240095A/WF4	3.1	37.5	5.9	26.6	
600	3/47	177	798	240118A/WF4	3.9	46.8	7.4	26.6	
600	3/47	266	798	240142A/WF4	5.9	70.3	11.0	26.6	
600	3/47	320	798	240171A/WF4	7.0	84.3	13.2	26.6	
600	3/47	427	798	270172A/WF4	9.4	112.4	17.7	26.6	
600	3/47	499	798	270196A/WF4	11.0	131.2	20.6	26.6	
650	2/53	215	1246	240095A/WF4	4.9	37.5	5.9	41.53	
650	2/53	269	1246	240118A/WF4	6.1	46.8	7.4	41.53	
650	2/53	404	1246	240142A/WF4	9.2	70.3	11.0	41.53	
650	2/53	485	1246	240171A/WF4	11.0	84.3	13.2	41.53	
650	2/53	563	1246	270172A/WF4	12.8	97.8	15.4	41.53	
700	2/53	200	1157	240095A/WF4	4.5	37.5	5.9	38.56	
700	2/53	250	1157	240118A/WF4	5.7	46.8	7.4	38.56	
700	2/53	375	1157	240142A/WF4	8.5	70.3	11.0	38.56	
700	2/53	450	1157	240171A/WF4	10.2	84.3	13.2	38.56	
700	2/53	523	1157	270172A/WF4	11.8	97.8	15.4	38.56	
1.7	320	3/47	257	1590	240095A/WF4	5.9	35.4	5.6	52.99
	320	3/47	322	1590	240118A/WF4	7.4	44.2	6.9	52.99
	320	3/47	485	1590	240142A/WF4	11.0	66.3	10.4	52.99
	320	3/47	582	1590	240171A/WF4	13.3	79.6	12.5	52.99
	320	3/47	777	1590	270172A/WF4	17.7	106.1	16.7	52.99
	320	3/47	906	1590	270196A/WF4	20.6	123.8	19.4	52.99

CONTINUE 

Inverter with feedback: VVVF - 4 poles - Max static load 4200 kg

Speed (m/s)	Sheave (Ø mm)	Ratio	O.B.L. (kg)	rpm	Motor Type	Motor Data			Hz Regul.
						(kWo)	(Nm)	(kW)	
1.7	360	3/47	241	1413	240095A/WF4	5.5	37.5	5.9	47.1
	360	3/47	302	1413	240118A/WF4	6.9	46.8	7.4	47.1
	360	3/47	454	1413	240142A/WF4	10.4	70.3	11.0	47.1
	360	3/47	545	1413	240171A/WF4	12.5	84.3	13.2	47.1
	360	3/47	727	1413	270172A/WF4	16.6	112.4	17.7	47.1
	360	3/47	848	1413	270196A/WF4	19.4	131.2	20.6	47.1
400	400	3/47	216	1272	240095A/WF4	5.0	37.5	5.9	42.39
	400	3/47	270	1272	240118A/WF4	6.2	46.8	7.4	42.39
	400	3/47	406	1272	240142A/WF4	9.4	70.3	11.0	42.39
	400	3/47	488	1272	240171A/WF4	11.2	84.3	13.2	42.39
	400	3/47	651	1272	270172A/WF4	15.0	112.4	17.7	42.39
	400	3/47	760	1272	270196A/WF4	17.5	131.2	20.6	42.39
450	450	3/47	191	1130	240095A/WF4	4.4	37.5	5.9	37.68
	450	3/47	238	1130	240118A/WF4	5.5	46.8	7.4	37.68
	450	3/47	359	1130	240142A/WF4	8.3	70.3	11.0	37.68
	450	3/47	431	1130	240171A/WF4	10.0	84.3	13.2	37.68
	450	3/47	575	1130	270172A/WF4	13.3	112.4	17.7	37.68
	450	3/47	671	1130	270196A/WF4	15.5	131.2	20.6	37.68
480	480	3/47	178	1060	240095A/WF4	4.2	37.5	5.9	35.32
	480	3/47	224	1060	240118A/WF4	5.2	46.8	7.4	35.32
	480	3/47	336	1060	240142A/WF4	7.8	70.3	11.0	35.32
	480	3/47	404	1060	240171A/WF4	9.4	84.3	13.2	35.32
	480	3/47	539	1060	270172A/WF4	12.5	112.4	17.7	35.32
	480	3/47	629	1060	270196A/WF4	14.6	131.2	20.6	35.32
520	520	3/47	164	978	240095A/WF4	3.8	37.5	5.9	32.61
	520	3/47	206	978	240118A/WF4	4.8	46.8	7.4	32.61
	520	3/47	310	978	240142A/WF4	7.2	70.3	11.0	32.61
	520	3/47	372	978	240171A/WF4	8.6	84.3	13.2	32.61
	520	3/47	497	978	270172A/WF4	11.5	112.4	17.7	32.61
	520	3/47	578	978	270196A/WF4	13.4	130.7	20.5	32.61
560	560	2/53	247	1536	240095A/WF4	5.9	36.6	5.7	51.21
	560	2/53	310	1536	240118A/WF4	7.4	45.7	7.2	51.21
	560	2/53	465	1536	240142A/WF4	11.0	68.6	10.8	51.21
	560	2/53	559	1536	240171A/WF4	13.2	82.3	12.9	51.21
	560	2/53	646	1536	270172A/WF4	15.3	95.1	14.9	51.21
	560	3/47	153	908	240095A/WF4	3.6	37.5	5.9	30.28
	560	3/47	192	908	240118A/WF4	4.5	46.8	7.4	30.28
	560	3/47	288	908	240142A/WF4	6.7	70.3	11.0	30.28
	560	3/47	346	908	240171A/WF4	8.0	84.3	13.2	30.28
	560	3/47	462	908	270172A/WF4	10.7	112.4	17.7	30.28
	560	3/47	537	908	270196A/WF4	12.4	130.7	20.5	30.28
	600	600	2/53	236	1434	240095A/WF4	5.6	37.5	5.9
600		2/53	295	1434	240118A/WF4	7.0	46.8	7.4	47.8
600		2/53	443	1434	240142A/WF4	10.6	70.3	11.0	47.8
600		2/53	532	1434	240171A/WF4	12.7	84.3	13.2	47.8
600		2/53	615	1434	270172A/WF4	14.6	97.4	15.3	47.8
600		3/47	142	848	240095A/WF4	3.3	37.5	5.9	28.26
600		3/47	177	848	240118A/WF4	4.2	46.8	7.4	28.26
600		3/47	267	848	240142A/WF4	6.2	70.3	11.0	28.26
600		3/47	320	848	240171A/WF4	7.5	84.3	13.2	28.26
600		3/47	427	848	270172A/WF4	10.0	112.4	17.7	28.26
600		3/47	499	848	270196A/WF4	11.7	131.2	20.6	28.26
650		650	2/53	216	1324	240095A/WF4	5.2	37.5	5.9
	650	2/53	271	1324	240118A/WF4	6.5	46.8	7.4	44.12
	650	2/53	407	1324	240142A/WF4	9.7	70.3	11.0	44.12
	650	2/53	488	1324	240171A/WF4	11.7	84.3	13.2	44.12
	650	2/53	564	1324	270172A/WF4	13.5	97.3	15.3	44.12
	650	3/47	131	783	240095A/WF4	3.1	37.5	5.9	26.09
650	3/47	163	783	240118A/WF4	3.8	46.8	7.4	26.09	

CONTINUE 

Inverter with feedback: VVVF - 4 poles - Max static load 4200 kg

Speed (m/s)	Sheave (Ø mm)	Ratio	O.B.L. (kg)	rpm	Motor Type	Motor Data			Hz Regul.	
						(kWo)	(Nm)	(kW)		
1.7	650	3/47	246	783	240142A/WF4	5.8	70.3	11.0	26.09	
	650	3/47	295	783	240171A/WF4	6.9	84.3	13.2	26.09	
	650	3/47	394	783	270172A/WF4	9.2	112.4	17.7	26.09	
	650	3/47	460	783	270196A/WF4	10.8	131.2	20.6	26.09	
	700	2/53	200	1229	240095A/WF4	4.8	37.5	5.9	40.97	
	700	2/53	250	1229	240118A/WF4	6.0	46.8	7.4	40.97	
	700	2/53	375	1229	240142A/WF4	9.0	70.3	11.0	40.97	
	700	2/53	450	1229	240171A/WF4	10.8	84.3	13.2	40.97	
	700	2/53	523	1229	270172A/WF4	12.6	97.8	15.4	40.97	
	2.0	400	3/47	217	1496	240095A/WF4	5.9	37.5	5.9	49.87
		400	3/47	272	1496	240118A/WF4	7.3	46.8	7.4	49.87
		400	3/47	410	1496	240142A/WF4	11.0	70.3	11.0	49.87
		400	3/47	492	1496	240171A/WF4	13.2	84.3	13.2	49.87
		400	3/47	657	1496	270172A/WF4	17.6	112.4	17.7	49.87
		400	3/47	767	1496	270196A/WF4	20.6	131.2	20.6	49.87
		450	3/47	192	1330	240095A/WF4	5.2	37.5	5.9	44.33
450		3/47	241	1330	240118A/WF4	6.5	46.8	7.4	44.33	
450		3/47	363	1330	240142A/WF4	9.8	70.3	11.0	44.33	
450		3/47	436	1330	240171A/WF4	11.7	84.3	13.2	44.33	
450		3/47	581	1330	270172A/WF4	15.7	112.4	17.7	44.33	
450		3/47	679	1330	270196A/WF4	18.3	131.2	20.6	44.33	
480		3/47	180	1247	240095A/WF4	4.9	37.5	5.9	41.56	
480		3/47	225	1247	240118A/WF4	6.1	46.8	7.4	41.56	
480		3/47	339	1247	240142A/WF4	9.2	70.3	11.0	41.56	
480		3/47	407	1247	240171A/WF4	11.0	84.3	13.2	41.56	
480		3/47	543	1247	270172A/WF4	14.7	112.4	17.7	41.56	
480		3/47	633	1247	270196A/WF4	17.1	131.2	20.6	41.56	
520		3/47	166	1151	240095A/WF4	4.5	37.5	5.9	38.36	
520		3/47	207	1151	240118A/WF4	5.6	46.8	7.4	38.36	
520		3/47	312	1151	240142A/WF4	8.5	70.3	11.0	38.36	
520		3/47	375	1151	240171A/WF4	10.2	84.3	13.2	38.36	
520		3/47	501	1151	270172A/WF4	13.5	112.4	17.7	38.36	
520		3/47	585	1151	270196A/WF4	15.8	131.2	20.6	38.36	
560		3/47	153	1069	240095A/WF4	4.2	37.5	5.9	35.62	
560		3/47	192	1069	240118A/WF4	5.2	46.8	7.4	35.62	
560		3/47	288	1069	240142A/WF4	7.9	70.3	11.0	35.62	
560		3/47	346	1069	240171A/WF4	9.4	84.3	13.2	35.62	
560		3/47	462	1069	270172A/WF4	12.6	112.4	17.7	35.62	
560		3/47	539	1069	270196A/WF4	14.7	131.2	20.6	35.62	
600		3/47	142	997	240095A/WF4	3.9	37.5	5.9	33.25	
600		3/47	179	997	240118A/WF4	4.9	46.8	7.4	33.25	
600		3/47	269	997	240142A/WF4	7.3	70.3	11.0	33.25	
600		3/47	323	997	240171A/WF4	8.8	84.3	13.2	33.25	
600		3/47	431	997	270172A/WF4	11.7	112.4	17.7	33.25	
600		3/47	501	997	270196A/WF4	13.6	130.7	20.5	33.25	
650		2/53	210	1557	240095A/WF4	5.9	36.1	5.7	51.91	
650		2/53	263	1557	240118A/WF4	7.4	45.1	7.1	51.91	
650		2/53	395	1557	240142A/WF4	11.0	67.7	10.6	51.91	
650		2/53	475	1557	240171A/WF4	13.2	81.2	12.8	51.91	
650		2/53	549	1557	270172A/WF4	15.3	93.8	14.7	51.91	
650		3/47	131	921	240095A/WF4	3.6	37.5	5.9	30.69	
650		3/47	165	921	240118A/WF4	4.5	46.8	7.4	30.69	
650		3/47	248	921	240142A/WF4	6.8	70.3	11.0	30.69	
650		3/47	298	921	240171A/WF4	8.1	84.3	13.2	30.69	
650		3/47	398	921	270172A/WF4	10.8	112.4	17.7	30.69	
650		3/47	463	921	270196A/WF4	12.6	130.7	20.5	30.69	
700		2/53	202	1446	240095A/WF4	5.7	37.5	5.9	48.2	

CONTINUE 

Inverter with feedback: VVVF - 4 poles - Max static load 4200 kg

Speed (m/s)	Sheave (Ø mm)	Ratio	O.B.L. (kg)	rpm	Motor Type	Motor Data			Hz Regul.
						(kWo)	(Nm)	(kW)	
2.0	700	2/53	253	1446	240118A/WF4	7.1	46.8	7.4	48.2
	700	2/53	380	1446	240142A/WF4	10.6	70.3	11.0	48.2
	700	2/53	456	1446	240171A/WF4	12.8	84.3	13.2	48.2
	700	2/53	527	1446	270172A/WF4	14.7	97.4	15.3	48.2
	700	3/47	121	855	240095A/WF4	3.4	37.5	5.9	28.5
	700	3/47	152	855	240118A/WF4	4.2	46.8	7.4	28.5
	700	3/47	228	855	240142A/WF4	6.3	70.3	11.0	28.5
	700	3/47	274	855	240171A/WF4	7.5	84.3	13.2	28.5
	700	3/47	366	855	270172A/WF4	10.1	112.4	17.7	28.5
	700	3/47	427	855	270196A/WF4	11.7	131.2	20.6	28.5
2.4	450	3/47	182	1596	240095A/WF4	5.9	35.2	5.5	53.19
	450	3/47	228	1596	240118A/WF4	7.4	44	6.9	53.19
	450	3/47	343	1596	240142A/WF4	11.0	66	10.4	53.19
	450	3/47	412	1596	240171A/WF4	13.2	79.2	12.4	53.19
	450	3/47	550	1596	270172A/WF4	17.7	105.7	16.6	53.19
	450	3/47	642	1596	270196A/WF4	20.6	123.3	19.4	53.19
	480	3/47	181	1496	240095A/WF4	5.9	37.5	5.9	49.87
	480	3/47	227	1496	240118A/WF4	7.3	46.8	7.4	49.87
	480	3/47	341	1496	240142A/WF4	11.0	70.3	11.0	49.87
	480	3/47	410	1496	240171A/WF4	13.2	84.3	13.2	49.87
480	3/47	547	1496	270172A/WF4	17.6	112.4	17.7	49.87	
480	3/47	639	1496	270196A/WF4	20.6	131.2	20.6	49.87	
520	3/47	166	1381	240095A/WF4	5.4	37.5	5.9	46.03	
520	3/47	209	1381	240118A/WF4	6.8	46.8	7.4	46.03	
520	3/47	314	1381	240142A/WF4	10.2	70.3	11.0	46.03	
520	3/47	377	1381	240171A/WF4	12.2	84.3	13.2	46.03	
520	3/47	503	1381	270172A/WF4	16.3	112.4	17.7	46.03	
520	3/47	587	1381	270196A/WF4	19.0	131.2	20.6	46.03	
560	3/47	155	1282	240095A/WF4	5.0	37.5	5.9	42.74	
560	3/47	194	1282	240118A/WF4	6.3	46.8	7.4	42.74	
560	3/47	291	1282	240142A/WF4	9.4	70.3	11.0	42.74	
560	3/47	350	1282	240171A/WF4	11.3	84.3	13.2	42.74	
560	3/47	467	1282	270172A/WF4	15.1	112.4	17.7	42.74	
560	3/47	545	1282	270196A/WF4	17.6	131.2	20.6	42.74	
600	3/47	144	1197	240095A/WF4	4.7	37.5	5.9	39.89	
600	3/47	180	1197	240118A/WF4	5.9	46.8	7.4	39.89	
600	3/47	271	1197	240142A/WF4	8.8	70.3	11.0	39.89	
600	3/47	325	1197	240171A/WF4	10.6	84.3	13.2	39.89	
600	3/47	434	1197	270172A/WF4	14.1	112.4	17.7	39.89	
600	3/47	507	1197	270196A/WF4	16.4	131.2	20.6	39.89	
650	3/47	131	1105	240095A/WF4	4.3	37.5	5.9	36.83	
650	3/47	165	1105	240118A/WF4	5.4	46.8	7.4	36.83	
650	3/47	248	1105	240142A/WF4	8.1	70.3	11.0	36.83	
650	3/47	298	1105	240171A/WF4	9.8	84.3	13.2	36.83	
650	3/47	398	1105	270172A/WF4	13.0	112.4	17.7	36.83	
650	3/47	464	1105	270196A/WF4	15.2	131.2	20.6	36.83	
700	3/47	122	1026	240095A/WF4	4.0	37.5	5.9	34.2	
700	3/47	153	1026	240118A/WF4	5.0	46.8	7.4	34.2	
700	3/47	230	1026	240142A/WF4	7.6	70.3	11.0	34.2	
700	3/47	277	1026	240171A/WF4	9.1	84.3	13.2	34.2	
700	3/47	369	1026	270172A/WF4	12.1	112.4	17.7	34.2	
700	3/47	430	1026	270196A/WF4	14.0	130.7	20.5	34.2	
2.5	480	3/47	175	1558	240095A/WF4	5.9	36.1	5.7	51.95
	480	3/47	219	1558	240118A/WF4	7.4	45.1	7.1	51.95
	480	3/47	329	1558	240142A/WF4	11.0	67.6	10.6	51.95
	480	3/47	396	1558	240171A/WF4	13.2	81.2	12.8	51.95
	480	3/47	528	1558	270172A/WF4	17.7	108.2	17.0	51.95
	480	3/47	616	1558	270196A/WF4	20.6	126.2	19.8	51.95

CONTINUE ENGINEERINGlift®
EUROPE LIFT COMPONENTSsales@engineeringlift.com
www.engineeringlift.com

Inverter with feedback: VVVF - 4 poles - Max static load 4200 kg

Speed (m/s)	Sheave (Ø mm)	Ratio	O.B.L. (kg)	rpm	Motor Type	Motor Data			Hz Regul.
						(kWo)	(Nm)	(kW)	
2.5	520	3/47	167	1439	240095A/WF4	5.7	37.5	5.9	47.95
	520	3/47	209	1439	240118A/WF4	7.1	46.8	7.4	47.95
	520	3/47	315	1439	240142A/WF4	10.6	70.3	11.0	47.95
	520	3/47	378	1439	240171A/WF4	12.7	84.3	13.2	47.95
	520	3/47	505	1439	270172A/WF4	16.9	112.4	17.7	47.95
	520	3/47	590	1439	270196A/WF4	19.8	131.2	20.6	47.95
560	560	3/47	155	1336	240095A/WF4	5.2	37.5	5.9	44.53
	560	3/47	194	1336	240118A/WF4	6.5	46.8	7.4	44.53
	560	3/47	291	1336	240142A/WF4	9.8	70.3	11.0	44.53
	560	3/47	350	1336	240171A/WF4	11.8	84.3	13.2	44.53
	560	3/47	467	1336	270172A/WF4	15.7	112.4	17.7	44.53
	560	3/47	545	1336	270196A/WF4	18.4	131.2	20.6	44.53
600	600	3/47	144	1247	240095A/WF4	4.9	37.5	5.9	41.56
	600	3/47	180	1247	240118A/WF4	6.1	46.8	7.4	41.56
	600	3/47	271	1247	240142A/WF4	9.2	70.3	11.0	41.56
	600	3/47	325	1247	240171A/WF4	11.0	84.3	13.2	41.56
	600	3/47	434	1247	270172A/WF4	14.7	112.4	17.7	41.56
	600	3/47	507	1247	270196A/WF4	17.1	131.2	20.6	41.56
650	650	3/47	133	1151	240095A/WF4	4.5	37.5	5.9	38.36
	650	3/47	166	1151	240118A/WF4	5.6	46.8	7.4	38.36
	650	3/47	250	1151	240142A/WF4	8.5	70.3	11.0	38.36
	650	3/47	300	1151	240171A/WF4	10.2	84.3	13.2	38.36
	650	3/47	401	1151	270172A/WF4	13.5	112.4	17.7	38.36
	650	3/47	468	1151	270196A/WF4	15.8	131.2	20.6	38.36
700	700	3/47	122	1069	240095A/WF4	4.2	37.5	5.9	35.62
	700	3/47	153	1069	240118A/WF4	5.2	46.8	7.4	35.62
	700	3/47	230	1069	240142A/WF4	7.9	70.3	11.0	35.62
	700	3/47	277	1069	240171A/WF4	9.4	84.3	13.2	35.62
	700	3/47	369	1069	270172A/WF4	12.6	112.4	17.7	35.62
	700	3/47	431	1069	270196A/WF4	14.7	131.2	20.6	35.62
2.8	560	3/47	155	1496	240095A/WF4	5.9	37.5	5.9	49.87
	560	3/47	194	1496	240118A/WF4	7.3	46.8	7.4	49.87
	560	3/47	293	1496	240142A/WF4	11.0	70.3	11.0	49.87
	560	3/47	351	1496	240171A/WF4	13.2	84.3	13.2	49.87
	560	3/47	469	1496	270172A/WF4	17.6	112.4	17.7	49.87
	560	3/47	547	1496	270196A/WF4	20.6	131.2	20.6	49.87
600	600	3/47	144	1396	240095A/WF4	5.5	37.5	5.9	46.54
	600	3/47	181	1396	240118A/WF4	6.8	46.8	7.4	46.54
	600	3/47	272	1396	240142A/WF4	10.3	70.3	11.0	46.54
	600	3/47	327	1396	240171A/WF4	12.3	84.3	13.2	46.54
	600	3/47	436	1396	270172A/WF4	16.4	112.4	17.7	46.54
	600	3/47	509	1396	270196A/WF4	19.2	131.2	20.6	46.54
650	650	3/47	133	1289	240095A/WF4	5.1	37.5	5.9	42.96
	650	3/47	167	1289	240118A/WF4	6.3	46.8	7.4	42.96
	650	3/47	251	1289	240142A/WF4	9.5	70.3	11.0	42.96
	650	3/47	301	1289	240171A/WF4	11.4	84.3	13.2	42.96
	650	3/47	402	1289	270172A/WF4	15.2	112.4	17.7	42.96
	650	3/47	470	1289	270196A/WF4	17.7	131.2	20.6	42.96
700	700	3/47	123	1197	240095A/WF4	4.7	37.5	5.9	39.89
	700	3/47	154	1197	240118A/WF4	5.9	46.8	7.4	39.89
	700	3/47	232	1197	240142A/WF4	8.8	70.3	11.0	39.89
	700	3/47	279	1197	240171A/WF4	10.6	84.3	13.2	39.89
	700	3/47	372	1197	270172A/WF4	14.1	112.4	17.7	39.89
	700	3/47	434	1197	270196A/WF4	16.4	131.2	20.6	39.89
3.0	600	3/47	145	1496	240095A/WF4	5.9	37.5	5.9	49.87
	600	3/47	181	1496	240118A/WF4	7.3	46.8	7.4	49.87
	600	3/47	273	1496	240142A/WF4	11.0	70.3	11.0	49.87

CONTINUE **ENGINEERINGlift**
EUROPE LIFT COMPONENTSsales@engineeringlift.com
www.engineeringlift.com

PERFORMANCE

Inverter with feedback: VVVF - 4 poles - Max static load 4200 kg

Speed (m/s)	Sheave (Ø mm)	Ratio	O.B.L. (kg)	rpm	Motor Type	Motor Data			Hz Regul.
						(kWo)	(Nm)	(kW)	
3.0	600	3/47	328	1496	240171A/WF4	13.2	84.3	13.2	49.87
	600	3/47	438	1496	270172A/WF4	17.6	112.4	17.7	49.87
	600	3/47	511	1496	270196A/WF4	20.6	131.2	20.6	49.87
	650	3/47	133	1381	240095A/WF4	5.4	37.5	5.9	46.03
	650	3/47	167	1381	240118A/WF4	6.8	46.8	7.4	46.03
	650	3/47	251	1381	240142A/WF4	10.2	70.3	11.0	46.03
	650	3/47	301	1381	240171A/WF4	12.2	84.3	13.2	46.03
	650	3/47	402	1381	270172A/WF4	16.3	112.4	17.7	46.03
	650	3/47	470	1381	270196A/WF4	19.0	131.2	20.6	46.03
	700	3/47	124	1282	240095A/WF4	5.0	37.5	5.9	42.74
	700	3/47	155	1282	240118A/WF4	6.3	46.8	7.4	42.74
	700	3/47	233	1282	240142A/WF4	9.4	70.3	11.0	42.74
	700	3/47	280	1282	240171A/WF4	11.3	84.3	13.2	42.74
	700	3/47	374	1282	270172A/WF4	15.1	112.4	17.7	42.74
	700	3/47	436	1282	270196A/WF4	17.6	131.2	20.6	42.74
3.2	600	3/47	136	1596	240095A/WF4	5.9	35.2	5.5	53.19
	600	3/47	171	1596	240118A/WF4	7.4	44	6.9	53.19
	600	3/47	257	1596	240142A/WF4	11.0	66	10.4	53.19
	600	3/47	309	1596	240171A/WF4	13.2	79.2	12.4	53.19
	600	3/47	412	1596	270172A/WF4	17.7	105.7	16.6	53.19
	600	3/47	481	1596	270196A/WF4	20.6	123.3	19.4	53.19
	650	3/47	133	1473	240095A/WF4	5.8	37.5	5.9	49.1
	650	3/47	167	1473	240118A/WF4	7.2	46.8	7.4	49.1
	650	3/47	252	1473	240142A/WF4	10.8	70.3	11.0	49.1
	650	3/47	303	1473	240171A/WF4	13.0	84.3	13.2	49.1
	650	3/47	404	1473	270172A/WF4	17.3	112.4	17.7	49.1
	650	3/47	472	1473	270196A/WF4	20.2	131.2	20.6	49.1
	700	3/47	124	1368	240095A/WF4	5.4	37.5	5.9	45.59
	700	3/47	155	1368	240118A/WF4	6.7	46.8	7.4	45.59
	700	3/47	233	1368	240142A/WF4	10.1	70.3	11.0	45.59
700	3/47	280	1368	240171A/WF4	12.1	84.3	13.2	45.59	
700	3/47	374	1368	270172A/WF4	16.1	112.4	17.7	45.59	
700	3/47	436	1368	270196A/WF4	18.8	131.2	20.6	45.59	

CONTINUE 

Company name: _____
Address: _____
Person referent: _____
e-mail: _____

Date: _____
Quantity: _____

GEAR - GEARLESS

GEAR DATA

GEAR TYPE	<input type="radio"/> GEAR <input type="radio"/> GEARLESS		
Installation position	<input type="radio"/> Righth-hand machine <input type="radio"/> Left-hand machine		
Gear ratio		
Drive system	<input type="radio"/> AC1 <input type="radio"/> AC2 <input type="radio"/> ACVV <input type="radio"/> VVVF <input type="radio"/> DC		
Rpm and motor power	Rpm	Power (kW)	<input type="radio"/> Asynchronous <input type="radio"/> Synchronous
Motor Voltage and Frequency	V: <input type="radio"/> 33 Hz <input type="radio"/> 50 Hz <input type="radio"/> 60 Hz		
Starting per hour	<input type="radio"/> 90 <input type="radio"/> 120 <input type="radio"/> 180 <input type="radio"/> 240		
Traction Sheave	Sheave Ø (mm)		
Ropes	N. Ropes	Ropes Ø (mm)	Pitch of grooves (mm)

PLAN DATA

Roping	<input type="radio"/> 1:1 <input type="radio"/> 2:1		
Speed m/s		
Gear position	<input type="radio"/> ABOVE MACHINE <input type="radio"/> BELOW MACHINE		
Travel and stops	Travel (m)	Stops n°	
Load	Useful load (Kg)	Cabin+car+frame+door operator (Kg)	CW (Kg)
Ropes	Weight (Kg)	Compensation <input type="radio"/> NO <input type="radio"/> YES	% Kg.
Ropes distance (mm)		

SPECIAL SUPPORT

Type	<input type="radio"/> INTERNAL <input type="radio"/> EXTERNAL		
Extended shaft	Centre line gear - centre line sheave (mm)		

MANUFACTURE

Made in ITALY			
Company name	<input type="radio"/> SICOR <input type="radio"/> Nuova MGT <input type="radio"/> SASSI		

NOTE

.....

.....

.....