

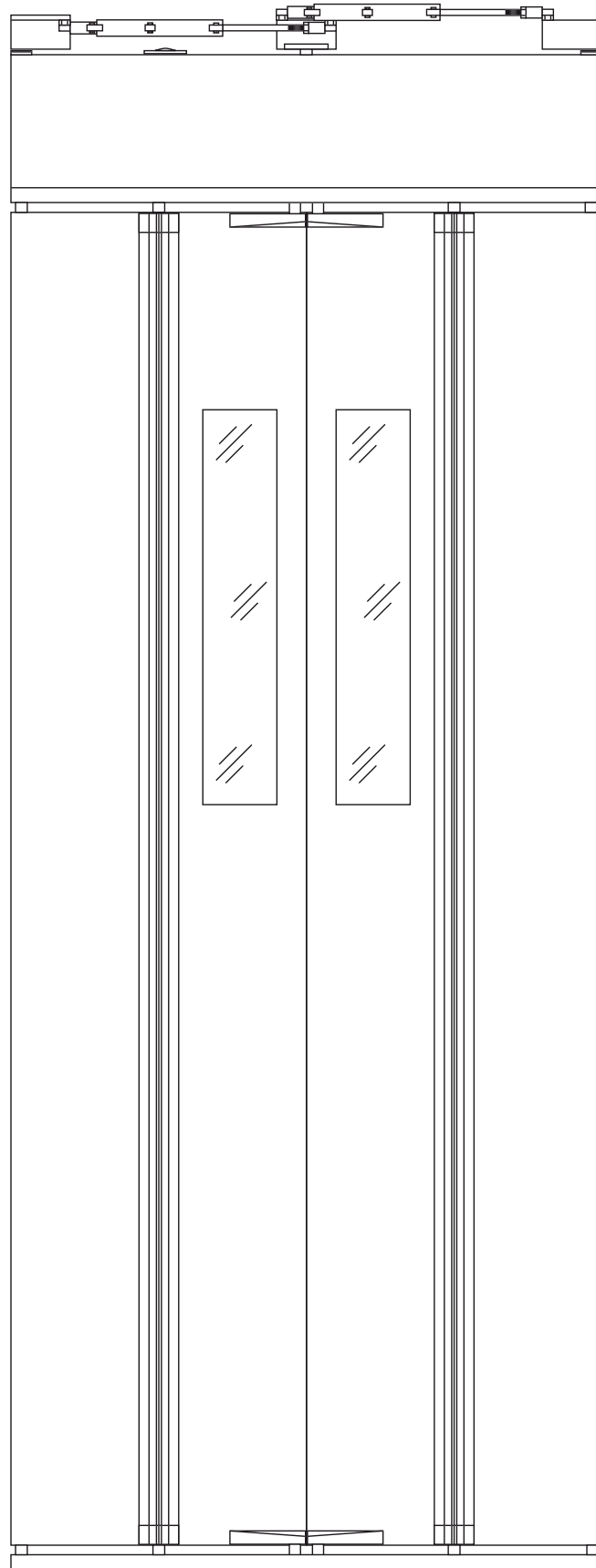
11. Automatic folding doors :

- 11.1. 4 Panel folding car door (Standard model).
- 11.2. 4 Panel folding car door (models «G» and «O»).
- 11.3. 4 Panel folding car door (Flat model).
- 11.4. 4 Panel folding car door ECC model.
- 11.5. Folding car door LB model.
- 11.6. Folding landing door LB model.
- 11.7. Side acting retractable cam for folding door.
- 11.8. Front acting retractable cam for folding door.
- 11.9. Side acting retractable cam for folding door ECC model.
- 11.10. Front acting retractable cam for folding door ECC model.



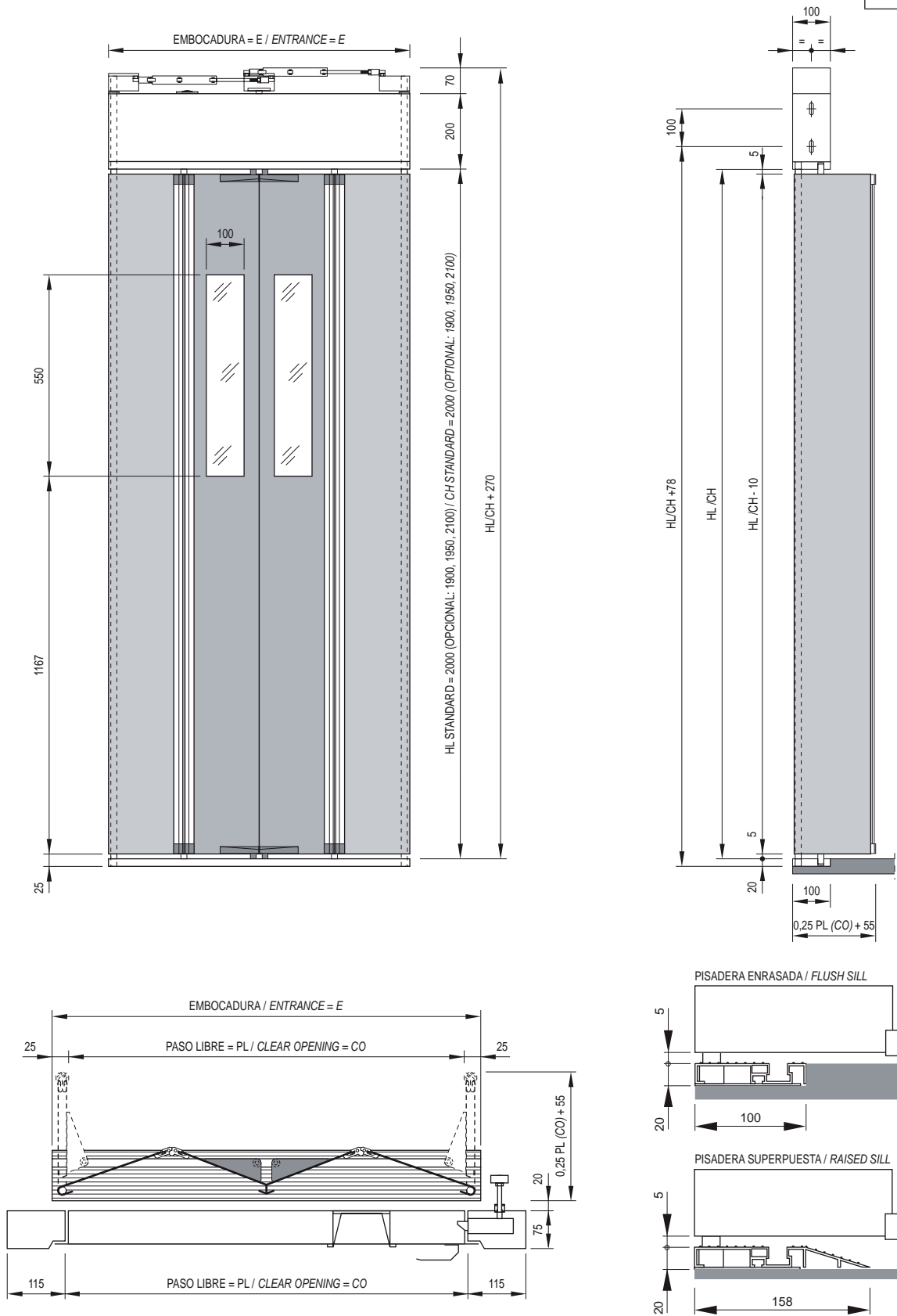
Automatic folding door

product by Fermator



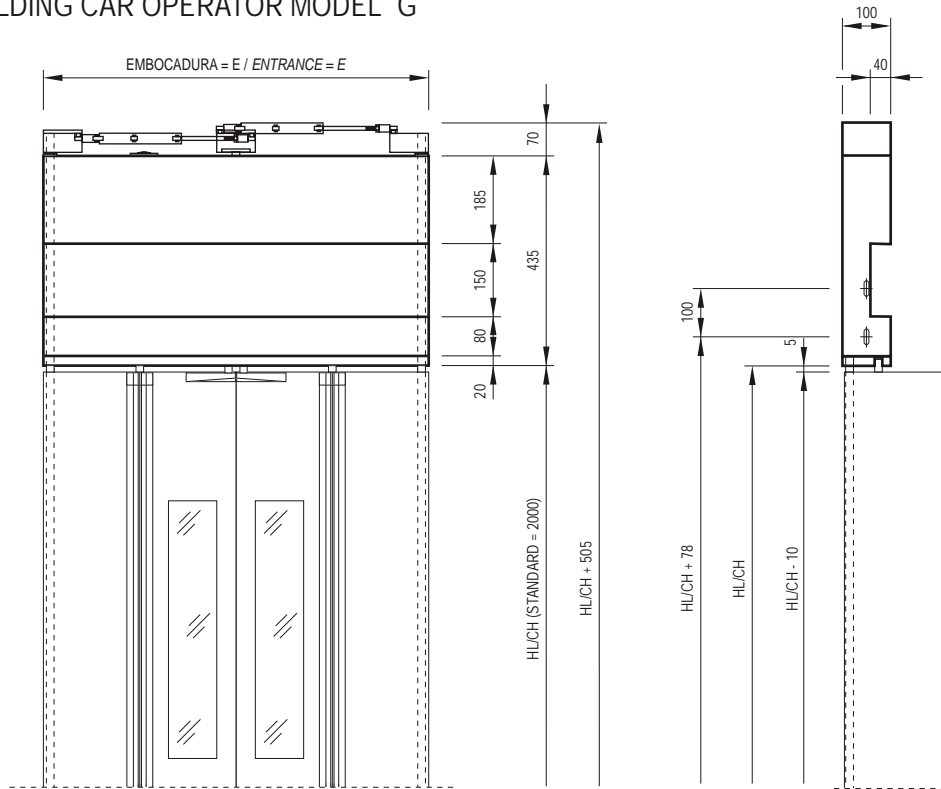
11



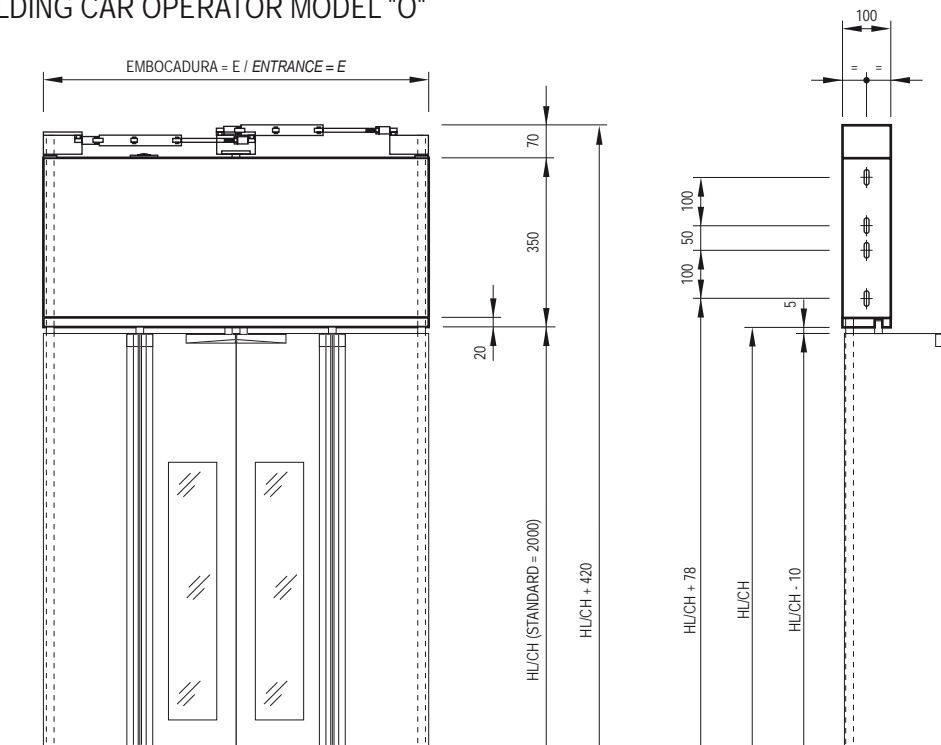


PL / CO	500	550	600	650	700	750	800	850	900	950	1000	1050	1100	1150
E	550	600	650	700	750	800	850	900	950	1000	1050	1100	1150	1200
TIEMPO / TIME (s)	2,8					3,4			3,7			3,9		
PESO / WEIGHT (kg)	35	39	41	43	46	48	50	52	54	56	58	60	62	64

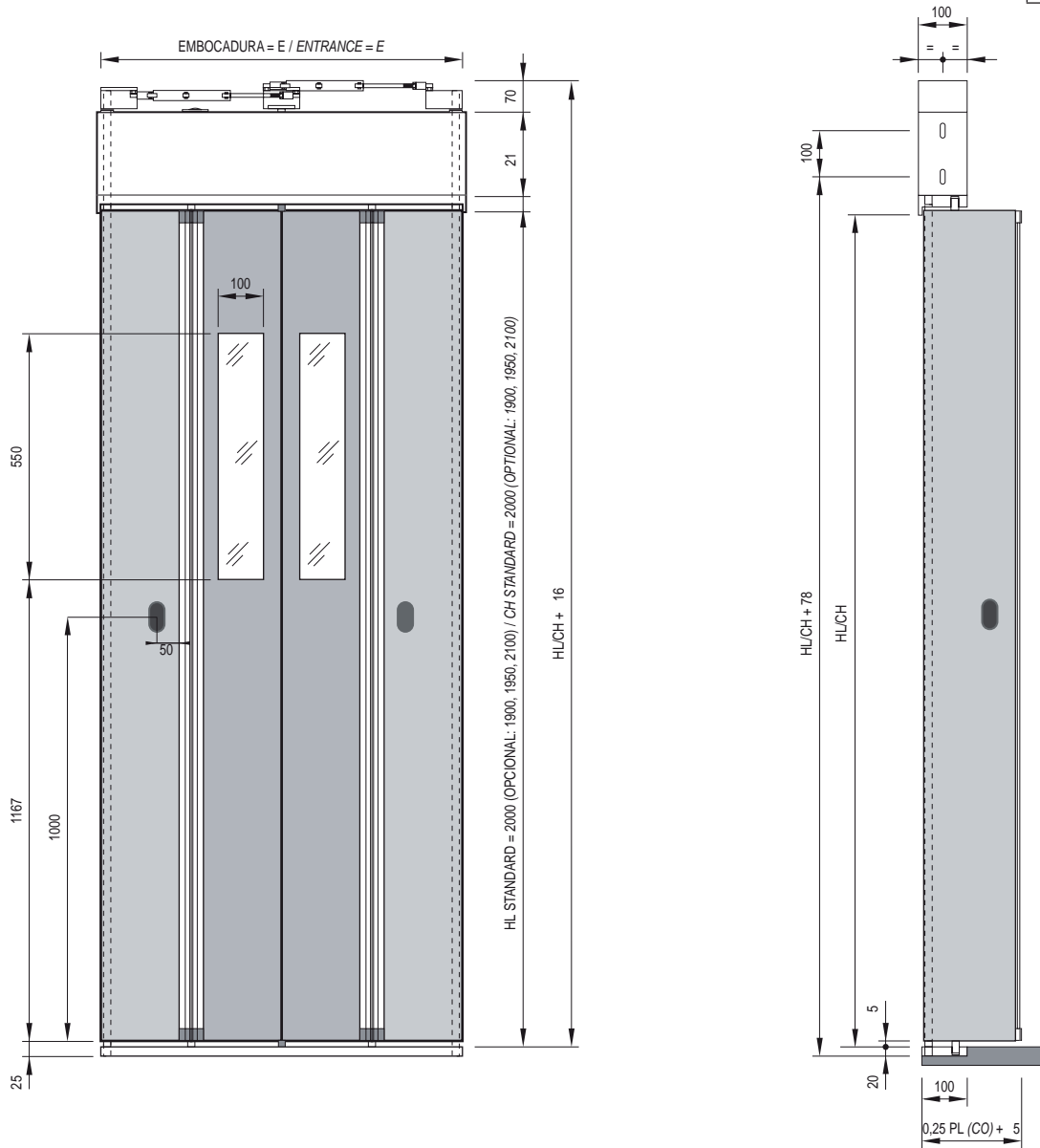
- OPCIONAL: OPERADOR PLEGABLE DE CABINA MODELO "G"
- OPTIONAL: FOLDING CAR OPERATOR MODEL "G"



- OPCIONAL: OPERADOR PLEGABLE DE CABINA MODELO "O"
- OPTIONAL: FOLDING CAR OPERATOR MODEL "O"



PL / CO	500	550	600	610	630	650	670	700	750	800	850	900	950	1000	1050	1100	1150
E	550	600	650	660	680	700	720	750	800	850	900	950	1000	1050	1100	1150	1200
TIEMPO / TIME (s)	2,8								3,4			3,7			3,9		
PESO / WEIGHT (kg)	35	39	41	41	42	43	44	46	48	50	52	54	56	58	60	62	64



PL / CO	500	550	600	610	630	650	670	700	750	800	850	900	950	1000	1050	1100	1150
E	550	600	650	660	680	700	720	750	800	850	900	950	1000	1050	1100	1150	1200
TIEMPO / TIME (s)	2,8								3,4			3,7			3,9		
PESO / WEIGHT (kg)	35	39	41	41	42	43	44	46	48	50	52	54	56	58	60	62	64

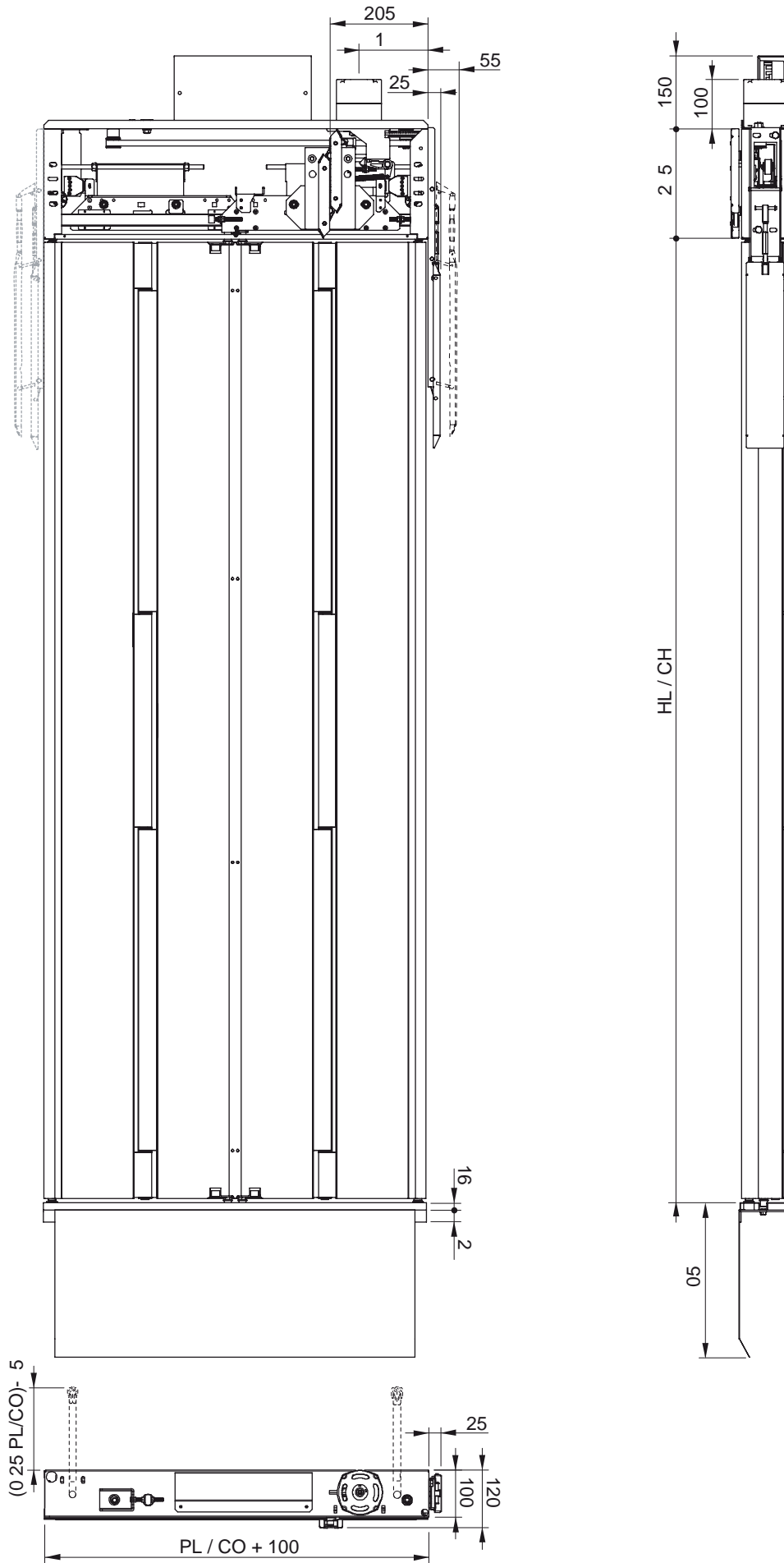
11.4.

PUERTA DE CABINA PLEGABLE MODELO ECC PLANO FOLDING CAR DOOR ECC FLAT MODEL



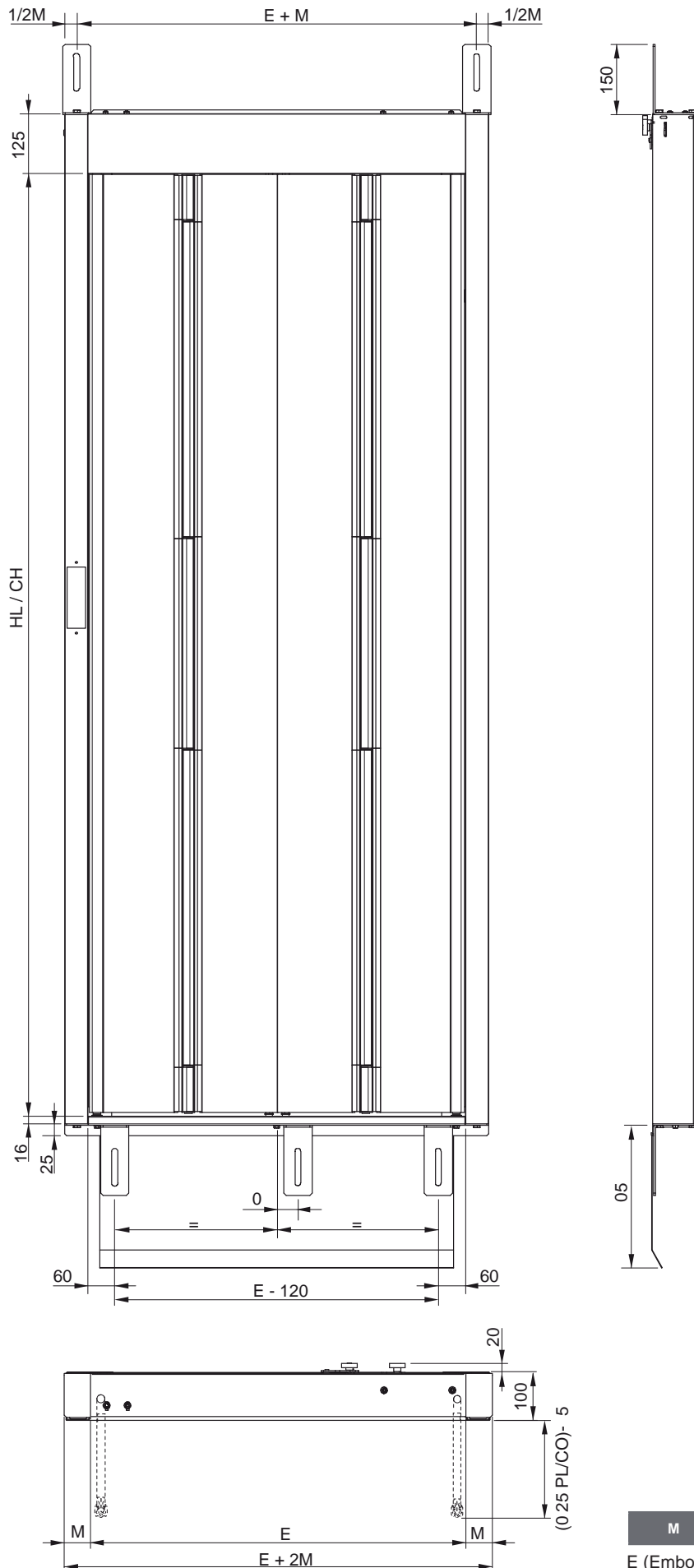
11

PL / CO	500	550	600	610	630	650	670	700	750	800	850	900	950	1000	1050	1100	1150
E	550	600	650	660	680	700	720	750	800	850	900	950	1000	1050	1100	1150	1200
TIEMPO / TIME (s)	2,8								3,4			3,7			3,9		
PESO / WEIGHT (kg)	35	39	41	41	42	43	44	46	48	50	52	54	56	58	60	62	64



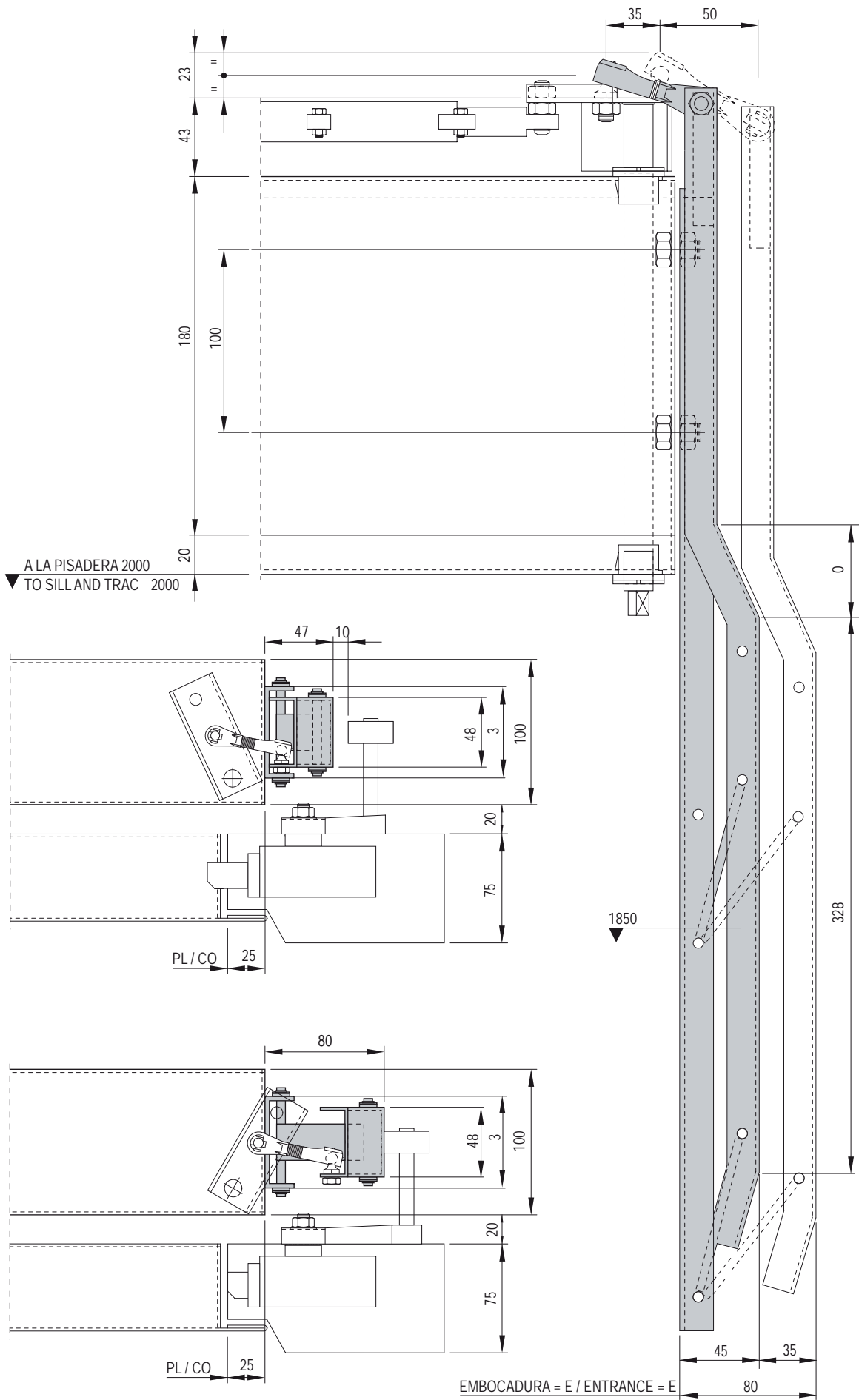
11.6.

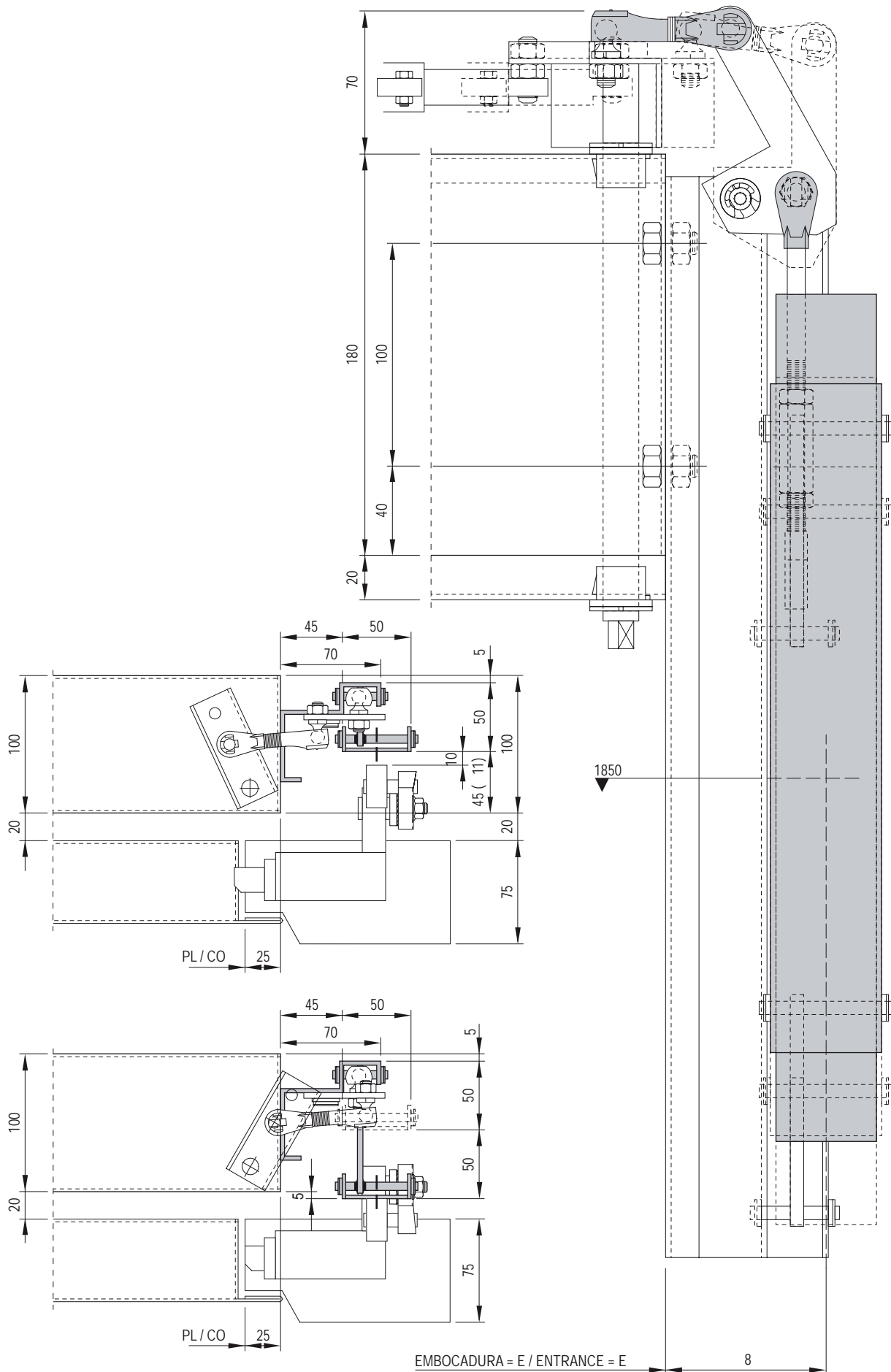
PUERTA DE RELLANO PLEGABLE MODELO LB FOLDING LANDING DOOR LB MODEL

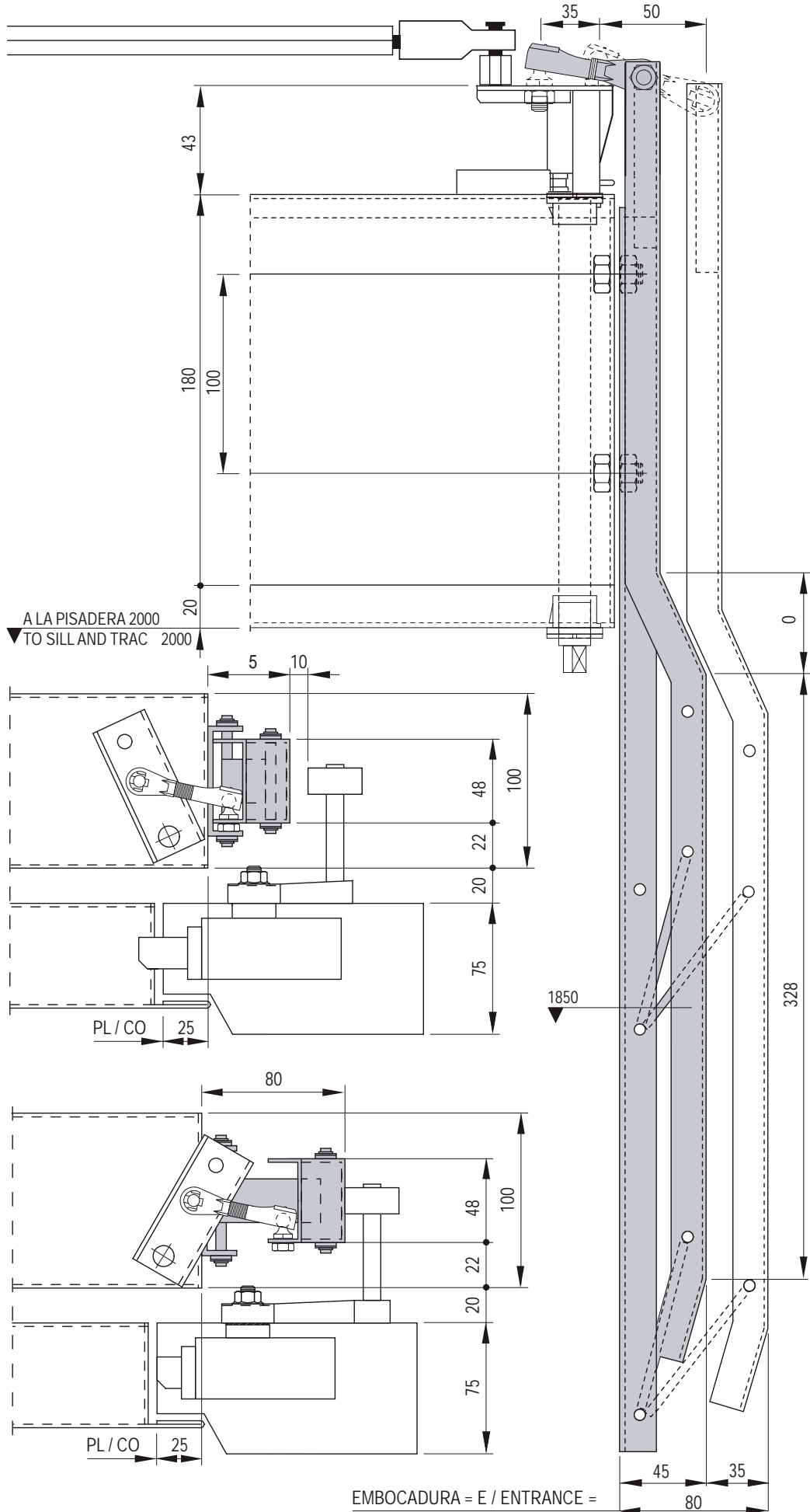


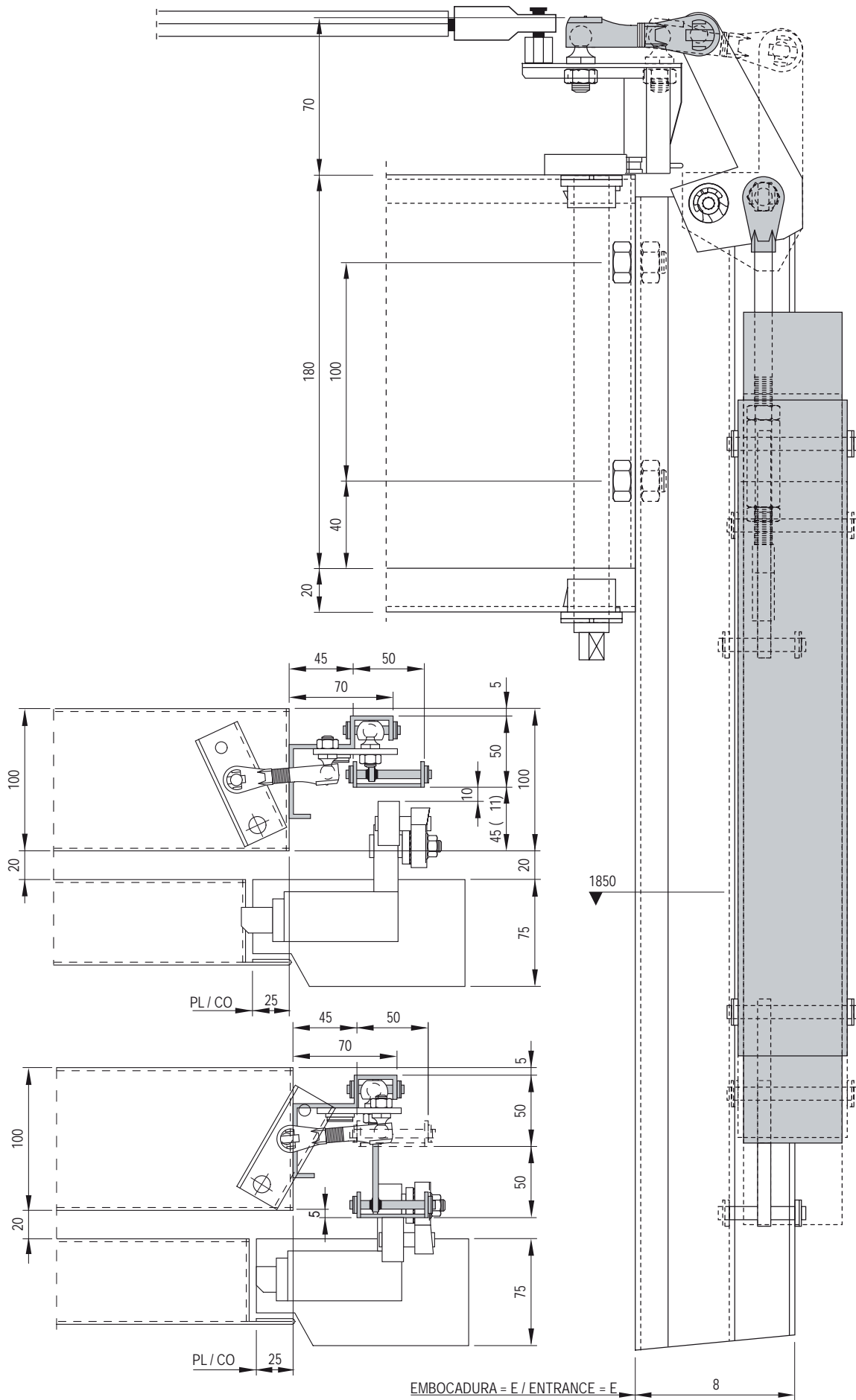
M	50	65	100

E (Embocadura/Entrance) = $PL/CO + 100$









Company name: _____
Address: _____
Person referent: _____
e-mail: _____

Date: _____
Quantity: _____

FOLDING CAR DOOR (Bus type)

Dimensions:

mm Clear opening (CO)
mm Clear height (CL)
mm Entrance (E)

Type:

- Standard
- ECC
- Type "Flat"
- Type "O"
- Type "G"

Claddings:

- Epoxi
- Stainless steel
- Other

Alimentation:

- Direct current: 12V 24V 48V
- Alternating current: 230V II 125/230V III 230/415V III
- Circuit board C2-T for 230V

Options:

- Emergency supply option
- Electrical cycles: 50Hz 60Hz

Options:

- Vision panel (100 x 550 mm)
- Big vision panel (4 panels)

Retractable cam:

- Left
- Right
- Side acting
- Front
- Front reduced

mm * Special height of the lock

Sill:

- Flush aluminium
- Raised aluminium

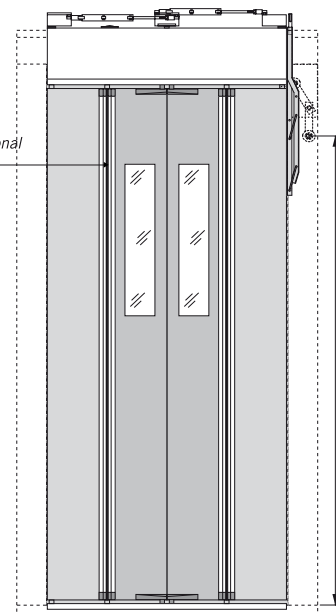
- Sill support

Guard:

- Standard 270 mm
- Big toeguard

NOTE

(Mirilla Opcional / Optional Vision Panel) ←



*
Áltura Estándar /
Standard Height
(1745 mm.)